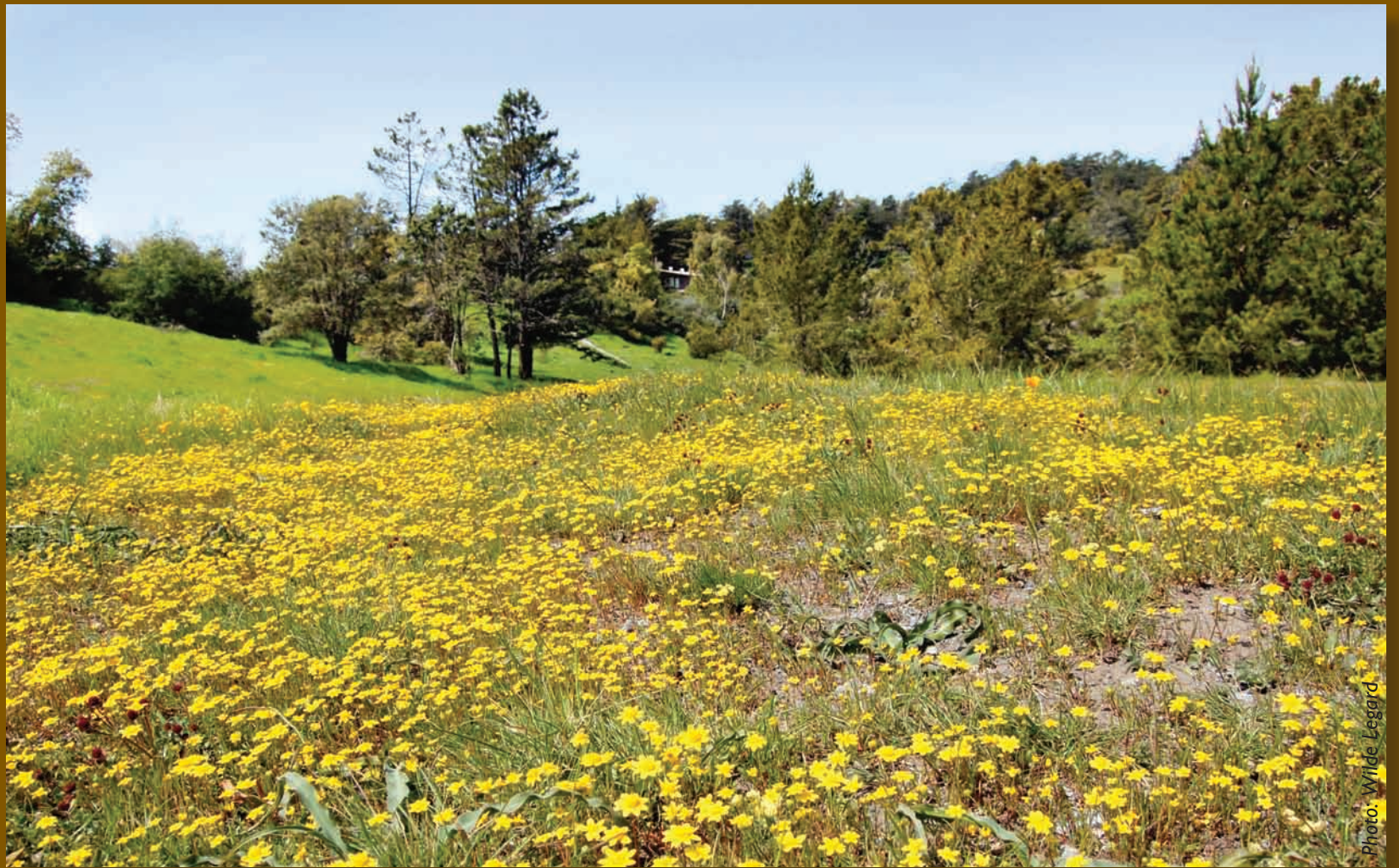




Serpentine Prairie

RESTORATION

Area of Critical Environmental Concern
Protect the Prairie - Stay on Designated Trails



Goldfields are native flowers that continue to thrive in the remaining prairie. However, overuse and invasive plants may seriously impact their overall survival. The District's restoration project is a long-range sustainable plan to ensure native plants and wildflower survival for park visitors to enjoy.

PHASE I: August - October 2009

The East Bay Regional Park District and partners are working to preserve this fragile ecosystem and create a healthy environment for rare and endangered plants to thrive. The grassland before you is part of PHASE I of a multi-year project. This phase will begin in August and should be finished by the end of October 2009. During this phase, we will be removing trees and installing a protective fence around a 3-acre site. The fence will remain in place to give the field a rest from overuse. We want our visitors to continue enjoying this area and will be completing a mile long loop trail around the perimeter that will connect to the Park's main trail system.

**PLEASE HELP PROTECT THIS SENSITIVE HABITAT
STAY ON DESIGNATED TRAILS**

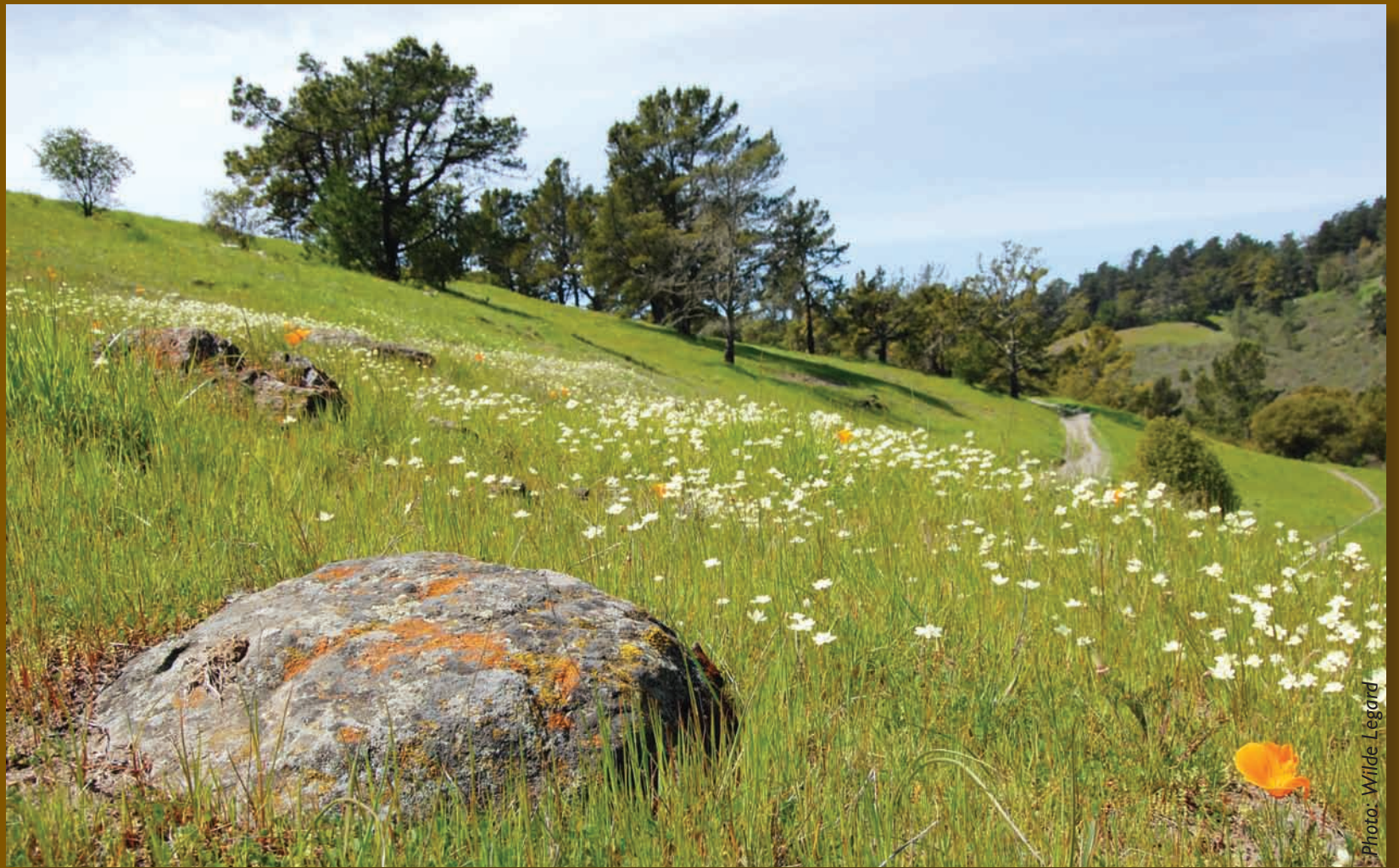
Project information, maps, photos, interpretive hikes, and upcoming meetings will be posted on our Website, www.ebparks.org and at Redwood Regional Park's bulletin board in the Skyline parking lot.



Serpentine Prairie

RESTORATION

Area of Critical Environmental Concern
Protect the Prairie - Stay on Designated Trails



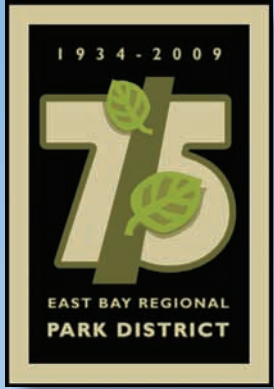
"The greatest treasure that this prairie preserves is serpentine grassland. Serpentine is California's official state rock and is critically important for the survival of many endangered species. The Skyline Serpentine Prairie, before the 1960s, was more than twice as large as it is now. The west half of the prairie was turned into housing and whatever botanical riches it preserved were lost forever. What remains is an exceedingly precious part of the biological heritage of California, but it has been deteriorating. Our window of opportunity for protecting it may be closing." Steve Edwards, Regional Parks Botanic Garden Director.

PHASE I: August - October 2009

The East Bay Regional Park District and partners are working to preserve this fragile ecosystem and create a healthy environment for rare and endangered plants to thrive. The grassland before you is part of PHASE I of a multi-year project. This phase will begin in August and should be finished by the end of October 2009. During this phase, we will be removing trees and installing a protective fence around a 3-acre site. The fence will remain in place to give the field a rest from overuse. We want our visitors to continue enjoying this area and will be completing a mile long loop trail around the perimeter that will connect to the Park's main trail system.

PLEASE HELP PROTECT THIS SENSITIVE HABITAT
STAY ON DESIGNATED TRAILS

Project information, maps, photos, interpretive hikes, and upcoming meetings will be posted on our Website, www.ebparks.org and at Redwood Regional Park's bulletin board in the Skyline parking lot.



Serpentine Prairie

RESTORATION

Area of Critical Environmental Concern Protect the Prairie - Stay on Designated Trails



The introduction of both non-native and native trees to the prairie has dramatically changed the composition of the soil. These trees are changing the composition of the soil by shedding leaves and needles and adding excessive moisture through fog drip. Removal of these trees is critical to the long-range success of restoring the prairie to its native state.

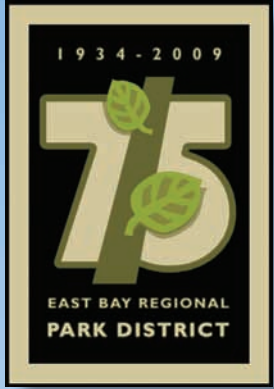
PHASE I: August - October 2009

The East Bay Regional Park District and partners are working to preserve this fragile ecosystem and create a healthy environment for rare and endangered plants to thrive. The grassland before you is part of PHASE I of a multi-year project. This phase will begin in August and should be finished by the end of October 2009. During this phase, we will be removing trees and installing a protective fence around a 3-acre site. The fence will remain in place to give the field a rest from overuse. We want our visitors to continue enjoying this area and will be completing a mile long loop trail around the perimeter that will connect to the Park's main trail system.

PLEASE HELP PROTECT THIS SENSITIVE HABITAT STAY ON DESIGNATED TRAILS

Project information, maps, photos, interpretive hikes, and upcoming meetings will be posted on our Website, www.ebparks.org and at Redwood Regional Park's bulletin board in the Skyline parking lot.





Serpentine Prairie

RESTORATION

Area of Critical Environmental Concern Protect the Prairie - Stay on Designated Trails



As part of Phase I, the Park District will complete a Serpentine Prairie loop trail with interpretive overlook. The trail will be open during the duration of the project so visitors can enjoy the area. This fairly level trail has a few gentle slopes.

PHASE I: August - October 2009

The East Bay Regional Park District and partners are working to preserve this fragile ecosystem and create a healthy environment for rare and endangered plants to thrive. The grassland before you is part of PHASE I of a multi-year project. This phase will begin in August and should be finished by the end of October 2009. During this phase, we will be removing trees and installing a protective fence around a 3-acre site. The fence will remain in place to give the field a rest from overuse. We want our visitors to continue enjoying this area and will be completing a mile long loop trail around the perimeter that will connect to the Park's main trail system.

PLEASE HELP PROTECT THIS SENSITIVE HABITAT STAY ON DESIGNATED TRAILS

Project information, maps, photos, interpretive hikes, and upcoming meetings will be posted on our Website, www.ebparks.org and at Redwood Regional Park's bulletin board in the Skyline parking lot.

