

# Eastshore State Park - Albany Beach Habitat Restoration and Public Access Feasibility Study



Brad Olson  
Environmental Programs Manager

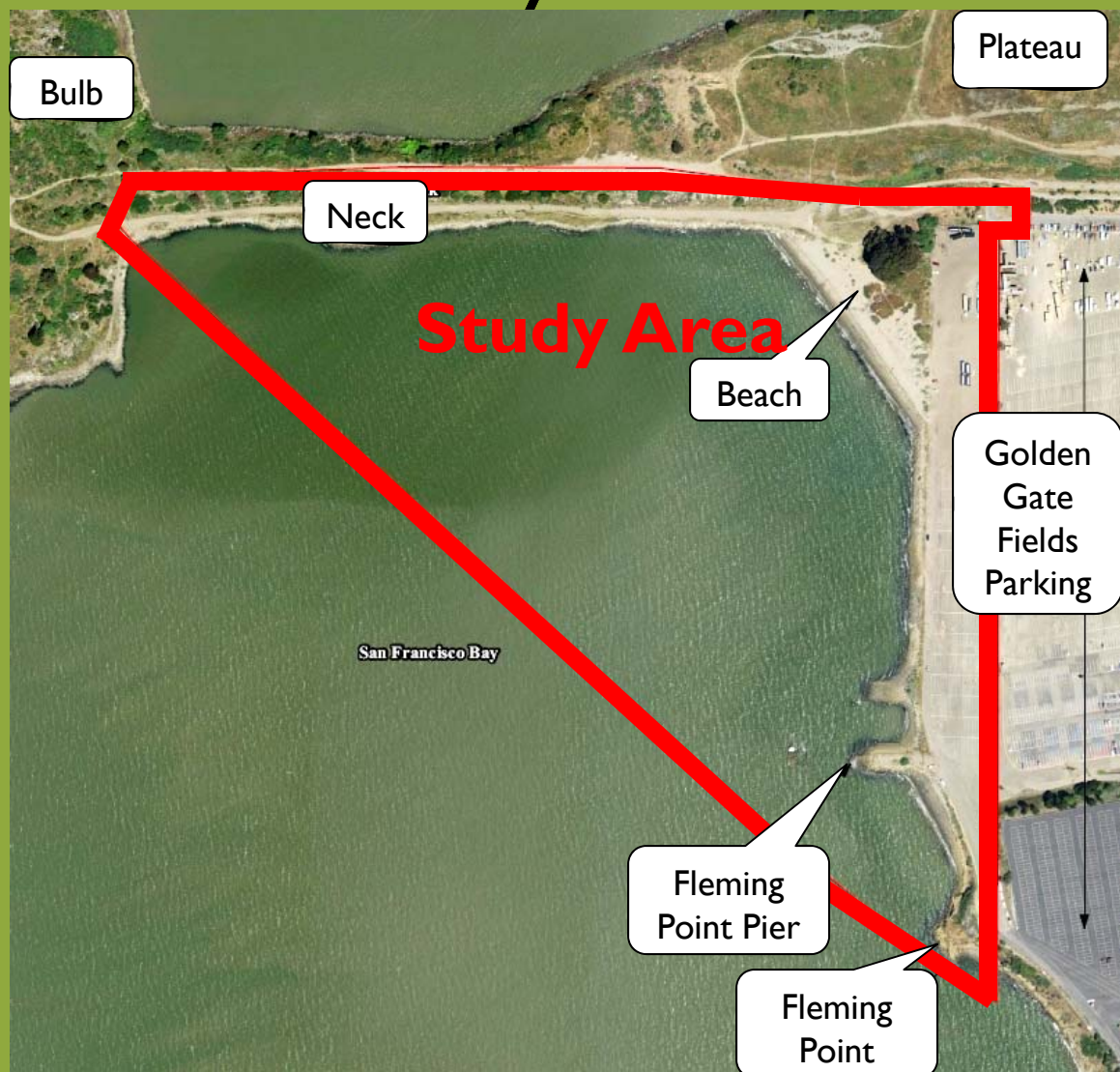
April 28, 2011

# Eastshore Park



**EASTSHORE STATE PARK - ALBANY BEACH**  
*Habitat Restoration and Public Access Feasibility Study*

# Study Area:



# Background

- Eastshore State Park General Plan Completed in 2002
- February 2010, Board Authorization to Hire LSA Associates and Proceed with Feasibility Study
- March 2010, Regulatory Agency Meeting
- September 2010, Board Executive Committee Update



**EASTSHORE STATE PARK - ALBANY BEACH**

*Habitat Restoration and Public Access Feasibility Study*

## Background (continued)

- October 2010, Citizens for East Shore Parks Update
- December 2010, Public Workshop #1
- January 2011, Board Executive Committee Update
- February 2011, Public Workshop #2



**EASTSHORE STATE PARK - ALBANY BEACH**

*Habitat Restoration and Public Access Feasibility Study*

# Significant Public Comments From Workshop #2

- Protect and Improve Water Quality
- Want Restrooms, Benches, Non-Motorized Watercraft Access and Better Beach Access
- Some Prefer Minimal to No Improvements
- Some Proposed Improvements Inconsistent with the General Plan (e.g. boating facilities, dog beaches, etc.)
- Confusion on Dog Policies (No policy changes proposed)
- Feasibility Study vs. Project



# District Activities In Albany Beach Area

- Resolution of Need and Necessity Approved on April 5, 2011
- San Francisco Bay Trail Project



# Recommendation Criteria

- Based on Feasibility Study and Outreach Efforts
- Implementation of Eastshore State Park General Plan
- Compliance with Regional Water Quality Control Board Order
- Property Ownership and Legal Access



# Recommendation Criteria (continued)

- Protection of Public Health and Safety
- Minimize Potential Environmental Impacts
- Permit Requirements and Approval Time
- Funding Availability and Restrictions
- Cost/Benefit Value

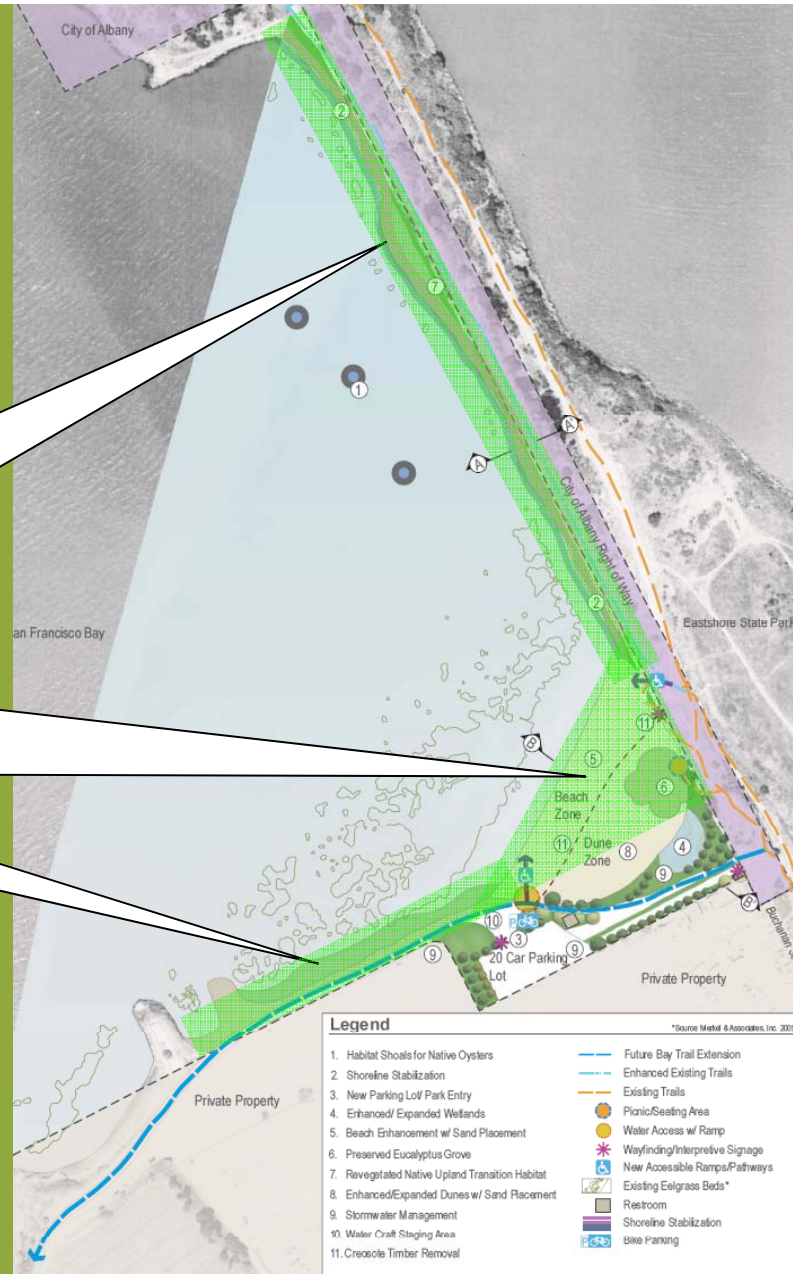


# Recommended Improvements



# Proposed Project

Creosote Timber and Inorganic Debris Removal



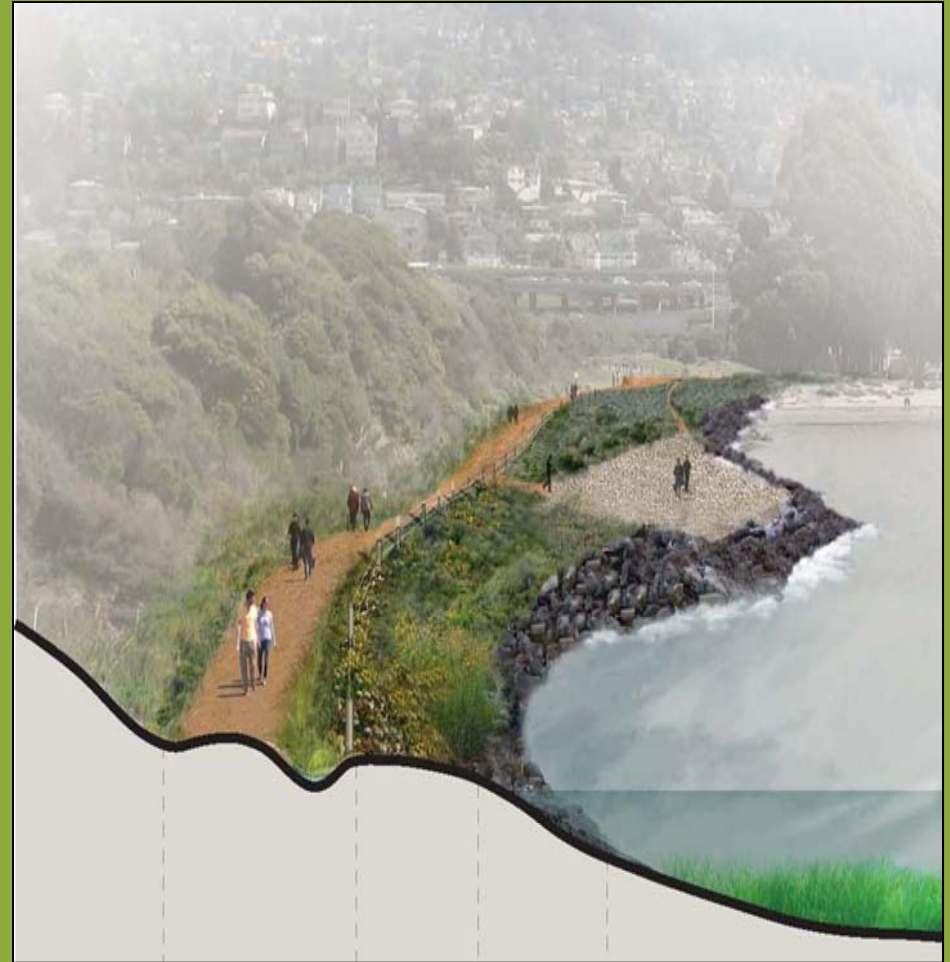
# Proposed Project

Shoreline Stabilization  
And Enhancement

Oyster Habitat



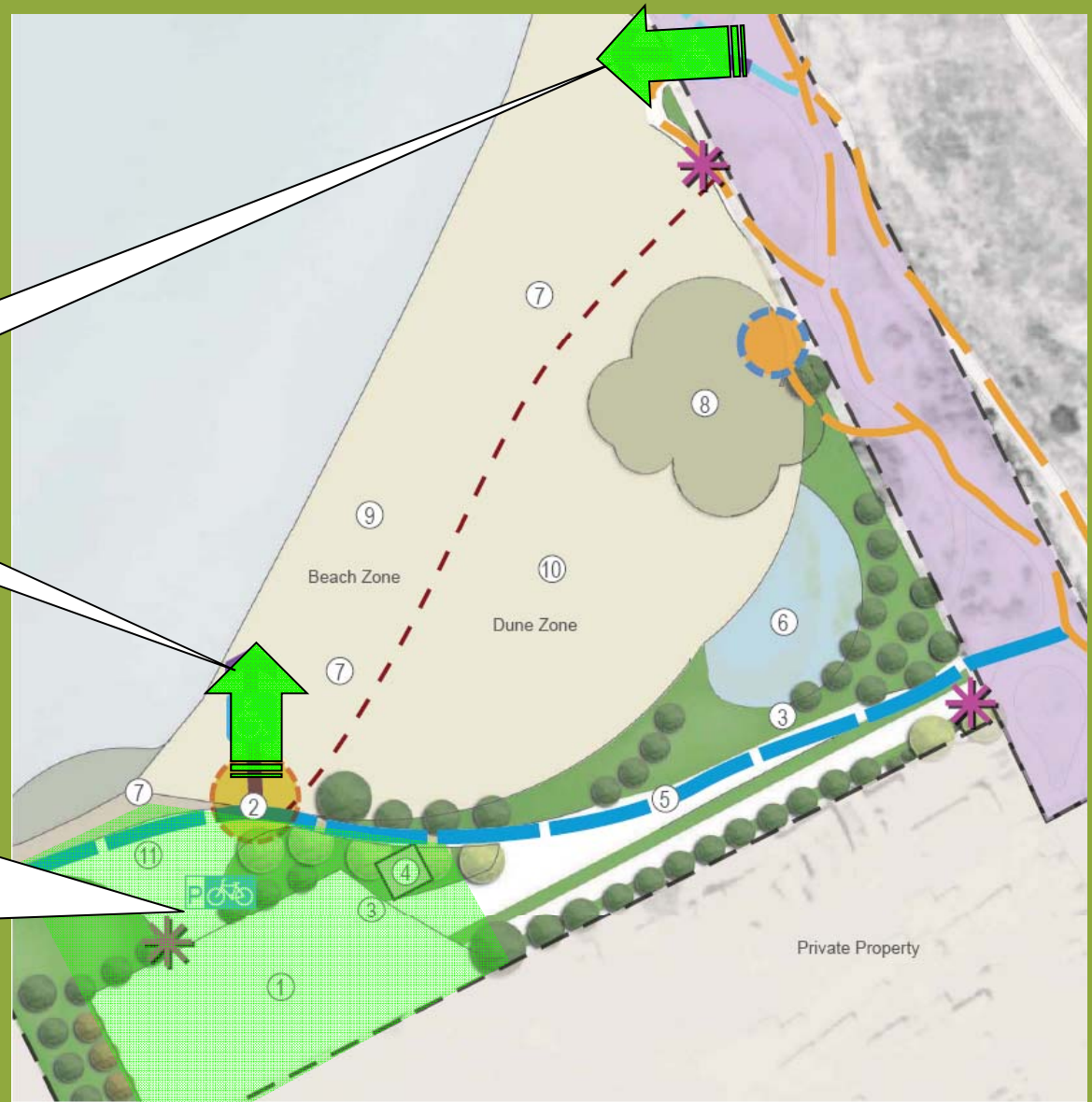
# Existing and Proposed Shoreline



# Proposed Project

Beach Access Enhancements

Water Access, Parking, Restroom, Bike Racks, Exhibits



# Proposed Project

Picnic Facility +  
Preserve Eucalyptus

Park Entrance  
Signage



# Proposed Project

Sand Placement at Beach and Dune + Dune Enhancement

Wetland Expansion and Enhancement

Habitat Protection (Fencing)



# Conceptual Project View



# Preliminary Cost Estimate Proposed Project

|                             |                 |
|-----------------------------|-----------------|
| – South Neck                | \$2,167,900     |
| – Albany Beach and Vicinity | \$1,796,150     |
| – In Water/Bay Work         | <u>\$30,000</u> |

Cost = \$3,994,050\*

\*Rough estimate based on concept alternatives and subject to refinement and revision as detailed design is developed. Does not include costs for property acquisition, easements, permitting, design, staff time, monitoring or maintenance. Presented in 2010 dollars.



# Operations and Maintenance

## Current Operations and Maintenance

- Restroom, Garbage/Dumping, Graffiti, Vandalism

## Potential Expansion to Service

- Restrooms
- Picnic Areas
- Paving
- Fences and Gates
- Weeding
- Public Safety



# Next Steps

- Approval of Project Description
- Identify Potential Funding Sources
- Board Direction on Next Steps

For More Information Contact Chris Barton at  
(510) 544-2627 or [cbarton@ebparks.org](mailto:cbarton@ebparks.org)





03/04/2010 17:02