

# EAST BAY REGIONAL PARK DISTRICT

## Consolidated Fee Schedule

Effective January 1, 2011

**I. ANTHONY CHABOT - I (888) EBPARKS, option 3, OR I (888) 327-2757 option 3, x4502**

|                             |  |
|-----------------------------|--|
| Family Camping              | \$22/night (walk-in/drive-in tent site)    |
|                             | \$30/night (sewer, water, electric 30 amp) |
|                             | \$6/night/additional vehicle               |
| Dog Fee                     | \$2/each/per day of campground stay        |
|                             | guide dog/service animal enter FREE        |
| Sewage Disposal Station Use | \$20/each use for non-campers              |
| Charcoal                    | \$10/bag                                   |
| Firewood (Bundle)           | \$6/bundle                                 |
| <b>Backpacking</b>          | <b>\$5/person/night</b>                    |

For Camping Fees, Group, Family and Equestrian Rules, Regulations and Reservation Department Phone Numbers, see #47.

**ANTHONY CHABOT EQUESTRIAN CENTER - (510) 569-4428**

|                            |   |
|----------------------------|---|
| Boarding                   | \$455/month (12 x 16 stall)                 |
|                            | \$460/month (10 x 20 stall)                 |
|                            | \$470/month (12 x 12 outside stall/paddock) |
| Lessons                    | \$60/hr, private                            |
|                            | \$50/hr, semi-private                       |
|                            | \$35/hr, group                              |
| Special Services Available | For an additional fee                       |

**SKYLINE RANCH EQUESTRIAN CENTER - (510) 336-0850**

|                            |                             |
|----------------------------|-----------------------------|
| Boarding                   | \$445/month (10 x 12 stall) |
| Oversized Stalls           | \$465/month (12 x 24 stall) |
| Lessons                    | \$60/hr, private            |
|                            | \$50/hr, semi-private       |
|                            | \$35/hr, group              |
| Special Services Available | For an additional fee       |

**CHABOT GUN CLUB - (510) 569-0213**

| <u>Pistol &amp; Rifle Fees</u> |          | <u>Public Trap</u> |        |
|--------------------------------|----------|--------------------|--------|
| Juniors - Under 18             | \$4/day  | Juniors - Under 18 | \$5/rd |
| Members                        | \$7/day  | Members            | \$7/rd |
| Guests                         | \$8/day  | Guests             | \$8/rd |
| Non-Members                    | \$14/day | Non-Members        | \$9/rd |
| - 18 & up                      |          | - 18 & up          |        |

**2. ARDENWOOD - I (888) EBPARKS, option 3, OR I (888) 327-2757, option 3, x4504**

| Park Entrance Fee | Tues/Wed/Sat | Thurs/Fri/Sun | Special Events** |
|-------------------|--------------|---------------|------------------|
| Adults (18+)      | \$2          | \$5           | \$8 - \$25       |
| Seniors (62+)     | \$2          | \$4           | \$6 - \$25       |
| Children (4-17)   | \$1          | \$4           | \$5 - \$25       |
| Group Adults      | \$3          | \$6           | N/A              |
| Group Children    | \$2.50       | \$4.50        | N/A              |
| Group Seniors     | \$3          | \$4.50        | N/A              |

\*\*Fees will vary by Special Event

# EAST BAY REGIONAL PARK DISTRICT

## Consolidated Fee Schedule

Effective January 1, 2011

### 2. **ARDENWOOD (continued)**

Patterson House Tour included in entrance fee on Thurs/Fri/Sun (April-October)

NOTE: Entrance fees cover normal Naturalist school programs within the park. A charge of \$40/hour/naturalist is required for all out-of-District reserved school programs. Other appropriate fees as authorized by the General Manager are charged for special general public programs and services.

#### **ARDENWOOD WEDDINGS & PICNICS – I (888) 327-2757**

##### Weddings

|                      |                           |                                |                |
|----------------------|---------------------------|--------------------------------|----------------|
| <u>Ceremony Only</u> |                           | <u>Wedding &amp; Reception</u> |                |
| 2009                 | Brunch /Lunch             | Friday Dinner                  | Sat/Sun Dinner |
| \$1200               | 5 Hours<br>\$1300--\$1750 | After 4:30pm<br>\$1925         | \$2200         |

(Over 225 people - ADD CHAIR RENTAL FOR ALL RECEPTIONS)

\*\*Catering Packages available from \$25-\$45/person

##### Group Picnics

| <u>Capacity</u> | <u>Rate</u> | <u>Capacity</u> | <u>Rate</u> | <u>Capacity</u> | <u>Rate</u> |
|-----------------|-------------|-----------------|-------------|-----------------|-------------|
| 50              | \$ 550      | 75              | \$ 780      | 100             | \$1,050     |
| 125             | \$1,400     | 150             | \$1,505     | 200             | \$2,075     |
| 300             | \$2,970     | 400             | \$3,870     | 1,200           | \$5,510     |

Youth Group \$8.75/person

Non-profit Day Camps (100 person minimum) \$5.50/person

Beverage and Catering Packages are available from \$17.65--\$32.65/person.

### 3. **BLACK DIAMOND MINES - I (888) EBPARKS, option 3, OR I (888) 327-2757, option 3, x4506**

Parking Fee \$5/vehicle (Weekends & Holidays/Year-Round)

\$4/trailer

Bus Load Entry/Parking Fee \$25/per bus

Backpacking \$5/person/night

(Includes Horse/Bicycle Camping)

##### Mining Museum

Underground Tour \$5/person

Professional Training Program \$5/person (\$70/minimum)

For Camping Fees, Group, Family, and Equestrian Rules, Regulations and Reservation Department Phone Numbers, see #44.

### 4. **BRIONES - I (888) EBPARKS, option 3, OR I (888) 327-2757, option 3, x4508**

Parking Fee at Alhambra & Bear Creek \$3/vehicle (Weekends & Holidays/Year-Round)

\$3/trailer

Bus Load Entry/Parking Fee \$25/per bus

Dog Fee \$2/each (guide dog/service animal enter FREE)

For Camping Fees, Group, Family and Equestrian Rules, Regulations and Reservation Department Phone Numbers, see #47.

# EAST BAY REGIONAL PARK DISTRICT

## Consolidated Fee Schedule

Effective January 1, 2011

### 5. **CONTRA LOMA - I (888) EBPARKS, option 3, OR I (888) 327-2757, option 3, x4518**

|  |   |
|--|---|
| Parking Fee                            | \$5/vehicle (Daily/Year-Round)<br>\$4/trailer   |
| Bus Load Entry/Parking Fee             | \$25/per bus  |
| Boat Inspections                       | \$4/cartop<br><b>\$7/ trailered</b>   |
| Daily Fishing Access Permit (REQUIRED) | \$5/day   |
| Boating Launching Fee                  | \$5/trailer boat<br>\$3/day (cartop or inflatable boat)<br>\$2/day (windsurfing board)  |
| Pool Access Fee                        | \$3 (age 16-61)<br>\$2 (age 1-15)<br>\$2 (seniors 62+ or disabled)<br>FREE under 1 year |
| Dog Fee                                | \$2/each (guide dog/service animal enter FREE)  |

For Picnic Reservation Information, see #48.

### 6. **COYOTE HILLS - I(888) EBPARKS, option 3, OR I (888) 327-2757, option 3, x4519**

|   |  |
|---|--|
| Parking Fee   | \$5/vehicle (Daily/Year-Round)<br>\$4/trailer  |
| Bus Load Entry/Parking Fee  | \$25/per bus                                   |
| Dog Fee   | \$2/each (guide dog/service animal enter FREE) |
| For Camping Fees, Group, Family, and Equestrian Rules, Regulations and Reservation Department Phone Numbers, see #44. |  |

### 7. **CROWN BEACH - I (888) EBPARKS, option 3, OR I (888) 327-2757, option 3, x4522**

|                            |   |
|----------------------------|---|
| Parking Fee                | \$5/vehicle (Daily/Memorial Day-Labor Day)<br>\$4/trailer (Weekends & Holidays/April-October) |
| Bus Load Entry/Parking Fee | \$25/per bus  |
| Dog Fee                    | \$2/each (guide dog/service animal enter FREE)  |

For Picnic Reservation Information, see #48.

### **BOARDSPORTS - (415) 385-1224**

|  |  |
|--|--|
| <u>Kiting Lessons</u> (Private-Weekdays) | \$125/hr (includes gear and equipment) |
| Group Lessons (Semi-Private)             | \$175/3-hrs; \$350/6-hrs               |
| <u>Windsurf Lessons</u>                  |  |
| Beginner #1 Saturday 10am-1pm            | \$82.50/includes gear                  |
| Beginner #2 Sunday 10am-1pm              | \$82.50/includes gear                  |
| Beginner Two-day Package (land & water)  | \$165/includes gear                    |
| Advanced Beginner                        | \$90/2-hrs, includes gear              |
| Private Lesson per hour                  | \$80/hr                                |
| <u>Equipment Rental</u>                  |  |
| Beginner Rental                          | \$35/2-hrs<br>\$55/4-hrs               |
| Intermediate Rental                      | \$50/2-hrs                             |
| Advanced Rental                          | \$80/4-hrs                             |

# EAST BAY REGIONAL PARK DISTRICT

## Consolidated Fee Schedule

Effective January 1, 2011

### **BOARDSPORTS (continued)**

#### Stand-Up Paddle Boarding

|                              |                            |
|------------------------------|----------------------------|
| Beginner Class includes gear | \$99/1½-hrs                |
| Stand-Up Paddle Board        | \$30/hr                    |
| Kids Camp – Weekdays, 3-hrs  | \$150/2-days (6-hrs total) |
| Single Kayak Rental          | \$20/1½-hrs                |
| Double Kayak Rental          | \$30/1½-hrs                |

### **8. CULL CANYON - I (888) EBPARKS, option 3, OR I (888) 327-2757, option 3, x4523**

|                             |  |
|-----------------------------|--|
| Beach Access Fee            | \$3.50 (age 16-61)<br>\$2.50 (age 1-15)<br>\$2.50 (seniors 62+ or disabled)<br>FREE under 1 year |
| Volleyball & Horseshoe sets | \$2/rental (\$20 refundable deposit)   |

For Picnic Reservation Information, see #48.

### **9. DEL VALLE - I (888) EBPARKS, option 3, OR I (888) 327-2757, option 3, x4524**

|   |  |
|---|--|
| Parking Fee                             | \$6/vehicle (Daily/Year-Round)<br>\$4/trailer<br>\$3/Arroyo Staging (Daily/Year-Round)<br>\$3/trailer (Arroyo Staging) |
| Bus Load Entry/Parking Fee              | \$25/per bus   |
| Boat Inspections                        | \$4/cartop<br>\$7/trailer  |
| Daily Fishing Access Permit (REQUIRED)  | \$5/day  |
| Boat Launching Fee                      | \$5/day (trailer boat)<br>\$3/day (cartop or inflatable boat)<br>\$1/day (windsurfing board)                           |
| Ohlone Wilderness Regional Trail Permit | \$2/person/year (Purchase at park or Reservation Dept.)<br>If requested by mail, the fee is \$2.50.                    |
| Backpacking (Ohlone Wilderness)         | \$5/night/per person (age 16 and over)<br>Age 15 and under FREE with adult   |
| Dog Fee                                 | \$2/each (guide dog/service animal enter FREE)   |
| Family Camping (includes parking fee)   | \$22/night (family site)<br>\$45/night (sewer, water, electric 50 amp)<br>\$6/night/addt'l vehicle                     |
| Sewage Disposal Station Use             | \$20/each (use by non-campers)   |
| Dog Fee for Campground                  | \$2/each/per day of campground stay  |
| Equestrian Camping (Individual)         | \$12/site (2 horses per site maximum)  |
| Amphitheater Reservation                | \$50   |

For Picnic Reservation Information, see #48. For Camping Fees, Group, Family and Equestrian Rules, Regulations and Reservation Department Phone Numbers, see #47.

### **SUNRISE MOUNTAIN SPORTS - (925) 245-9481**

#### Rentals

|                          |                             |
|--------------------------|-----------------------------|
| Single Kayak             | \$15/hr, \$10 per addt'l hr |
| Double Kayak             | \$25/hr, \$15 per addt'l hr |
| Single Hobie Pedal-Power | \$20/hr, \$10 per addt'l hr |

# EAST BAY REGIONAL PARK DISTRICT

## Consolidated Fee Schedule

Effective January 1, 2011

### **SUNRISE MOUNTAIN SPORTS (continued)**

#### Rentals

|                          |                             |
|--------------------------|-----------------------------|
| Double Hobie Pedal-Power | \$30/hr, \$15 per addt'l hr |
| Single Sea Kayak         | \$20/hr, \$10 per addt'l hr |
| Double Sea Kayak         | \$30/hr, \$15 per addt'l hr |
| Triple Kayak             | \$35/hr, \$20 per addt'l hr |
| Quad Kayak               | \$45/hr, \$25 per addt'l hr |

#### Lessons

|                                       |               |
|---------------------------------------|---------------|
| Introduction to Recreational Kayaking | \$59/half day |
| Re-Entry Techniques                   | \$59/half day |
| Basic Sea Kayaking                    | \$89/day      |
| Guided 2-hour Lake Tour               | \$45/person   |

### **ROCKY MOUNTAIN RECREATION COMPANY - (925) 449-5201**

#### Boat Rental Rates

|  |   |
|--|---|
| Motor Boats                            | \$33/2-hrs, \$9/hr (3-6hrs), \$70/day   |
| Deluxe Motor Boats                     | \$60/2-hrs, \$15/hr (3-6hrs), \$130/day |
| Patio Boat                             | \$75/2-hrs, \$20/hr (3-6hrs), \$170/day |
| Pedal Boats/Canoes/Rowboats (4-person) | \$10/hr, \$7/hr thereafter, \$38/day    |
| Tour Boat                              | Price varies per program                |
| Capsized Board Charge                  | \$50                                    |

#### Refundable Deposits

|                                     |
|-------------------------------------|
| \$40/Pedal Boats, Canoes & Rowboats |
| \$75/Motor Boats                    |
| \$150/Deluxe Motorboats             |
| \$200/Patio Boats                   |

Senior Discount: 40% off full or half-day rentals, Monday-Friday only; excludes holidays and weekends.

### **10. DIABLO FOOTHILLS - Castle Rock Recreation Area -**

**I (888) EBPARKS, option 3, OR I (888) 327-2757, option 3, x4526**

|                 |                                  |
|-----------------|----------------------------------|
| Pool Access Fee | \$3.50 (age 16-61)               |
|                 | \$2.50 (age 1-15)                |
|                 | \$2.50 (seniors 62+ or disabled) |
|                 | FREE under 1 year                |

Private Rental of Pool - (2-hour minimum; includes lifeguard service.)

| <u>Group Size</u> | <u>Fee</u> | <u>Additional Hour</u> |
|-------------------|------------|------------------------|
| 1 - 50            | \$225      | \$75                   |
| 51 - 100          | \$275      | \$100                  |
| 101 -150          | \$325      | \$125                  |

For Picnic Reservation Information, see #48.

### **11. DON CASTRO - I (888) EBPARKS, option 3, OR I (888) 327-2757, option 3, x4527**

|                            |   |
|----------------------------|---|
| Parking Fee                | \$5/vehicle (Weekends & Holidays/April-October) |
| Bus Load Entry/Parking Fee | \$25/per bus                                    |
| Beach Access Fee           | \$3 (age 16-61)                                 |
|                            | \$2 (age 1-15)                                  |
|                            | \$2 (seniors 62+ or disabled)                   |
|                            | FREE under 1 year                               |

# EAST BAY REGIONAL PARK DISTRICT

## Consolidated Fee Schedule

Effective January 1, 2011

### 11. **DON CASTRO** (continued)

|  |  |
|--|--|
| Dog Fee                                | \$2/each (guide dog/service animal enter FREE) |
| Daily Fishing Access Permit (REQUIRED) | \$5/day (purchase at concession machine)       |

For Picnic Reservation Information, see #48.

### 12. **GARIN - I** (888) EBPARKS, option 3, OR I (888) 327-2757, option 3, x4530

|                            |   |
|----------------------------|---|
| Parking Fee                | \$5/vehicle (Weekends & Holidays/Year-Round)<br>\$4/trailer |
| Bus Load Entry/Parking Fee | \$25/per bus  |
| Dog Fee                    | \$2/each (guide dog/service animal enter FREE)              |

For Picnic Reservation Information, see #48. For Camping Fees, Group, Family, and Equestrian Rules, Regulations and Reservation Department Phone Numbers, see #47.

### 13. **KENNEDY GROVE - I** (888) EBPARKS, option 3, OR I (888) 327-2757, option 3, x4534

|                               |  |
|-------------------------------|--|
| Parking Fee                   | \$5/vehicle (Weekends & Holidays/April–October)<br>\$4/trailer |
| Bus Load Entry/Parking Fee    | \$25/per bus   |
| Dog Fee                       | \$2/each (guide dog/service animal enter FREE)                 |
| Volleyball and Horseshoe sets | \$2/rental (\$20 refundable deposit)                           |
| Electricity Charge            | \$45/day   |
| Amphitheater Reservation      | \$50/with Clancy's Place reservation                           |

For Picnic Reservation Information, see #48.

### 14. **LAKE CHABOT - I** (888) EBPARKS, option 3, OR I (888) 327-2757, option 3, x4536

|  |  |
|--|--|
| Parking Fee                            | \$5/vehicle (Daily/Year-Round)<br>\$4/trailer  |
| Bus Load Entry/Parking Fee             | \$25/per bus                                   |
| Boat Inspections                       | \$4/cartop                                     |
| Dog Fee                                | \$2/each (guide dog/service animal enter FREE) |
| Daily Fishing Access Permit (REQUIRED) | \$5/day (purchase at Marina Coffee Shop)       |
| Volleyball & Horseshoe sets            | \$5 rental (\$30 refundable deposit)           |

For Picnic Reservation Information, see #48.

### **URBAN PARK CONCESSIONAIRES - (510) 247-2526**

#### Boat Rental Fees

|                                  |   |
|----------------------------------|---|
| Refundable Deposits              | \$40; \$50/Electric                               |
| Capsized Boat Charge             | \$50  |
| Boat Launch (Canoe/Kayak)        | \$2   |
| Rowboats/Canoes /one-seat Kayaks | \$20/hr, \$28/2 hrs, \$32/½ day, \$40/day         |
| Senior discount (Mon-Fri only)   | 50% off rowboats/canoes/kayaks; 25% off electrics |
| 2-person Kayaks                  | \$20/hr, \$32/½ day, \$40/day                     |
| Electric Boats                   | \$25/hr, \$45/½ day, \$55/day                     |
| 4-person Pedal (Paddle) Boats    | \$20/hr, \$32/½ day, \$38/day                     |
| Electric Pontoon Patio Boat      | \$65/hr, \$130/2-hrs, \$200/4-hrs                 |
| DEPOSIT for Pontoon              | \$225   |
| Deluxe Patio Boats               | \$85/hr, \$170/2-hrs, \$270/4-hrs                 |

# EAST BAY REGIONAL PARK DISTRICT

## Consolidated Fee Schedule

Effective January 1, 2011

### **URBAN PARK CONCESSIONAIRES (continued)**

|   |  |
|---|--|
| Tour Boat (Lake Tours)                  | \$4.25/hr/adults (13 and older)<br>\$2.75/hr/children (12 and under) |
| Charter Boat, reservable (510) 582-2198 | \$75/hr  |

### **WILLOW PARK GOLF COURSE - (510) 537-8989**

|                   |   |
|-------------------|---|
| Green Fees        | \$20/weekdays, 9 holes (M-F)<br>\$25/weekdays, 18 holes (M-F)<br>\$35/weekends and holidays, 18 holes<br>\$25/weekends and holidays, 9 holes afternoon (call) |
| Golf Cart Rentals | \$12/person/18 holes; \$8/person/9 holes  |

### **15. LAS TRAMPAS - I (888) EBPARKS, option 3, OR I (888) 327-2757, option 3, x4537**

For Camping Fees, Group, Family, and Equestrian Rules, Regulations and Reservation Department Phone Numbers, see #47.

### **G&C SERVICES, LLC at LAS TRAMPAS STABLES - (925) 862-9044**

|   |  |
|---|--|
| Boarding                                    | \$380/month (12 x 24 Paddock Barn)<br>\$480/month (10 x 30 Stall/Paddock Barn) |
| Trail Ride                                  | \$40-\$95 depending on length of ride (1-4hrs)                                 |
| Trail Ride – Organized Youth Groups         | \$25/hr/person   |
| Birthday Parties: 8 person/4 horses/2 staff | \$475  |
| Lessons                                     | \$35-\$75/hr   |
| Day Camps                                   | \$425 (M-F, 9 am – 3 pm)   |
| Horse Trailer Parking                       | \$25   |
| Special Services Available                  | For an Additional Fee  |

### **THE PICNIC PEOPLE INC. – LITTLE HILLS RECREATION AREA - (925) 462-1400**

| <u>Picnic Site</u>  | <u>Capacity</u> | <u>Area Rental</u> |
|---------------------|-----------------|--------------------|
| Johnson's Gulch     | 50              | \$ 550             |
| Wildcat Canyon      | 75              | \$ 825             |
| Lookout Ridge       | 100             | \$1,105            |
| Buckeye Flat        | 150             | \$1,665            |
| Moonshine Heaven    | 200             | \$2,215            |
| Low Lander's Holler | 200             | \$2,215            |
| High Falutin' Hill  | 300             | \$3,330            |
| Half of Park        | 600 (375 min)   | \$3,990            |
| Exclusive Park Use  | 1,400 (700 min) | \$7,235            |

Beverage and Catering Packages are available from \$17.65-\$32.95/person.

|                     |               |
|---------------------|---------------|
| Youth Group Camp    | \$8.75/person |
| Non-Profit Day Camp | \$5.50/person |

### **16. MARTIN LUTHER KING, JR. – I(888) EBPARKS, option 3, OR I (888) 327-2757, option 3, x4541**

|  |                   |
|--|-------------------|
| Overflow Parking for Sporting and Events | \$10-\$20/vehicle |
|--|-------------------|

For Picnic Reservation Information, see #48.

# EAST BAY REGIONAL PARK DISTRICT

## Consolidated Fee Schedule

Effective January 1, 2011

17. **MILLER-KNOX - I (888) EBPARKS, option 3, OR I (888) 327-2757, option 3, x4544**  
For Picnic Reservation Information. see #48.

**GOLDEN GATE MODEL RAILROAD MUSEUM – (510) 234-4884**

\$9 Family                      \$24 Individual Membership  
\$4 Adults                      \$45 Family Membership  
\$2 Seniors & Children (12 and under)

18. **MISSION PEAK - I (888) EBPARKS, option 3, OR I (888) 327-2757, option 3, x4545**

Ohlone College Trailhead Parking                      \$2/Daily Permit (College Imposed Fee)  
Backpacking                      \$5/person/night  
(Purchase Ohlone Wilderness Permit at Sunol or Coyote Hills Regional Parks)

19. **MORGAN TERRITORY - I (888) EBPARKS, option 3, OR I (888) 327-2757, option 3, x4546**

Backpacking                      \$5/night/person  
(Includes Horse/Bicycle Camping)

20. **POINT ISABEL - I (888) EBPARKS, option 3, OR I (888) 327-2757, option 3, x4550**

**MUDPUPPYS TUB & SCRUB – (510) 559-8899 WEEKEND RESERVATIONS NEEDED**

|                       |   |
|-----------------------|---|
| Basic Wash (by size)  | \$21 (small), \$26 (medium), \$31 (large), \$36 (extra large) |
| Wash with Nails       | \$26 (small), \$31 (medium), \$26 (large), \$41 (extra large) |
| Wash with Flea Dip    | \$26 (small), \$31 (medium), \$36 (large), \$41 (extra large) |
| Wash with Conditioner | \$26 (small), \$31 (medium), \$36 (large), \$41 (extra large) |
| Self-Serve Wash       | \$15  |
| Add-on: Conditioner   | \$5   |
| Blow-Dry              | \$7   |
| Towel                 | \$1   |

21. **POINT PINOLE - I (888) EBPARKS, option 3, OR I (888) 327-2757, option 3, x4551**

Parking Fee                      \$3/vehicle (Weekends & Holidays/Year-Round)  
    \$3/trailer  
Bus Load Entry/Parking Fee                      \$25/per bus  
Dog Fee                      \$2/each (guide dog/service animal enter FREE)  
Shuttle Ride Fee (round trip)                      \$1.00 (age 12 and older)  
    \$0.50 (age 6 – 11)  
    FREE under 6, seniors 62+ or disabled

For Picnic Reservation Information, see #48.

22. **QUARRY LAKES - I (888) EBPARKS, option 3, OR I (888) 327-2757, option 3, x4552**

Parking Fee                      \$5/vehicle (Daily/Year-Round)  
    \$4/trailer  
Bus Load Entry/Parking Fee                      \$25/per bus  
Boat Inspections                      \$4/cartop  
    \$7/trailer  
Daily Fishing Access Permit (REQUIRED)                      \$5/day  
Boat Launching Fee                      \$5/day trailered boat  
    \$3/day cartop or inflatable boat

**EAST BAY REGIONAL PARK DISTRICT**

Consolidated Fee Schedule

Effective January 1, 2011

**22. QUARRY LAKES (continued)**

- Dog Fee \$2/each (guide dog/service animal enter FREE)
- Beach Access Fee \$3 (age 16-61)  
\$2 (age 1-15)  
\$2 (seniors 62+ or disabled)  
Free under 1 year old

For Picnic Reservation Information, see #48.

**23. REDWOOD - I (888) EBPARKS, option 3, OR I (888) (327-2757, option 3, x4553**

- Parking Fee \$5/vehicle (Weekends & Holidays/April–October)  
\$4/trailer
- Bus Load Entry/Parking Fee \$25/per bus
- Dog Fee \$2/each (guide dog/service animal enter FREE)

For Picnic Reservation Information, see #48.

For Camping Fees, Group, Family and Equestrian Rules, Regulations and Reservation Department Phone Numbers, see #47.

**PIEDMONT STABLES - (510) 531-9944**

- Boarding \$445/month (10 x12 stall)

**24. ROBERTS - I (888) EBPARKS, option 3, OR I (888) 327-2757, option 3, x4555**

- Parking Fee \$5/vehicle (Daily/Year-Round)  
\$4/trailer
- Bus Load Entry/Parking Fee \$25/per bus
- Dog Fee \$2/each (guide dog/service animal enter FREE)
- Pool Access Fee \$3 (age 16 – 61)  
\$2 (age 1 – 15)  
\$2 (seniors 62+ and disabled)  
FREE under 1
- Lap Swim \$3.50/visit; \$25 for 10 visits

For Picnic Reservation Information, see #48.

Private Rental of Pool - (2-hour minimum; includes lifeguard service)

| <u>Group Size</u> | <u>Fee</u> | <u>Additional Hour</u> |
|-------------------|------------|------------------------|
| 1 - 50            | \$225      | \$75                   |
| 51 - 100          | \$275      | \$100                  |
| 101 -150          | \$325      | \$125                  |

**25. ROUND VALLEY – I (888) EBPARKS, option 3, OR I (888) 327-2757, option 3, x4556**

- Parking Fee \$3/vehicle (Daily/Year-Round)  
\$3/trailer
- Backpacking \$5/person/night

For Camping Fees, Group, Family, and Equestrian Rules, Regulations and Reservation Department Phone Numbers, see #44.

## EAST BAY REGIONAL PARK DISTRICT

### Consolidated Fee Schedule

Effective January 1, 2011

#### 26. **SHADOW CLIFFS - I (888) EBPARKS, option 3, OR I (888) 327-2757, option 3, x4557**

|  |  |
|--|--|
| Parking Fee                            | \$6/vehicle (Daily/Year-Round)                 |
|  | \$4/trailer                                    |
| Bus Load Entry/Parking Fee             | \$25/per bus                                   |
| Boat Launching Fee                     | \$5/day trailered boat                         |
|  | \$3/day cartop or inflatable boat              |
|  | \$2/day windsurfing board                      |
| Daily Fishing Access Permit (REQUIRED) | \$5/day  |
| Dog Fee                                | \$2/each (guide dog/service animal enter FREE) |

For Picnic Reservation Information, see #48.

#### **ROCKY MOUNTAIN RECREATION CO. - (925) 426-0197**

|                               |                                   |
|-------------------------------|-----------------------------------|
| Refundable Deposit            | \$20, \$40/rowboat, \$50/electric |
| Rowboats                      | \$15/hr; \$7/each add'l hr        |
| 4-person Pedal (Paddle) Boats | \$15/hr                           |
| Electric Boats                | \$20/hr; \$10/add'l hr            |
| Kayaks: Hourly Rate           | \$10/hr                           |
| Capsized Boat Charge          | \$50                              |

#### **CALIFORNIA SPLASH II - (925) 829-6230**

|                         |                      |
|-------------------------|----------------------|
| Waterslides             | \$8/ ½ Hour Use      |
|                         | \$10/ 1 Hour Use     |
|                         | \$13.95/ ½ Day Use   |
|                         | \$19.95/ All Day Use |
| Reservable Picnic Sites | \$75 - \$100         |

#### 27. **SUNOL - I (888) EBPARKS, option 3, OR I (888) 327-2757, option 3, x4559**

|  |  |
|--|--|
| Parking Fee                                      | \$5/vehicle (Daily/Year-Round)                           |
|  | \$4/trailer  |
| Bus Load Entry/Parking Fee                       | \$25/per bus   |
| Dog Fee  | \$2/each (guide dog/service animal enter FREE)           |
| Backpacking                                      | \$5/night/person (age 16 and over)                       |
|  | --Age 15 and under FREE with adult                       |
| Ohlone Wilderness Regional Trail Permit          | \$2/person/year (Purchase at park or Reservations Dept.) |
|  | If requested by mail, the fee is \$2.50.                 |
| Ohlone Wilderness horse camping<br>(Doe Camp #1) | \$7/person/night (Includes 2 flakes of hay)              |
| Family Camping                                   | \$14/night (no showers or hot water)                     |
| Camp Ohlone                                      | \$200/security deposit                                   |

For Camping Fees, Group, Family, and Equestrian Rules, Regulations and Reservation Department Phone Numbers, see #44.

#### **WESTERN TRAIL RIDING SERVICES - (925) 862-9044**

|                                      |  |
|--------------------------------------|--|
| Trail Rides                          | \$40-\$95 depending on length of ride (1-4hrs)   |
|                                      | (\$40/1-hr; \$55/2-hrs; \$60/2½-hrs; \$95/4-hrs) |
| Trail Rides / Organized Youth Groups | \$25/rider (1-hr)                                |
| Experienced Riders Only              | \$180/full-day (higher elevation)                |

# EAST BAY REGIONAL PARK DISTRICT

## Consolidated Fee Schedule

Effective January 1, 2011

- 28. TEMESCAL - 1 (888) EBPARKS, option 3, OR 1 (888) 327-2757, option 3, x4561**
- |  |  |
|--|--|
| Parking Fee                            | \$5/vehicle (Weekends & Holidays/April-October)<br>\$4/trailer (North Lot Only)              |
| Bus Load Entry/Parking Fee             | \$25/per bus (North Lot Only)  |
| Dog Fee                                | \$2/each (guide dog/service animal enter FREE)   |
| Beach Access Fee                       | \$3 (age 16 – 61)<br>\$2 (age 1 – 15)<br>\$2 (seniors 62+ and disabled)<br>FREE under 1 year |
| Daily Fishing Access Permit (REQUIRED) | \$5/day (purchase at concession machine)   |

For Picnic Reservation Information, see #48.

- 29. TILDEN - 1 (888) EBPARKS, option 3, OR 1 (888) 327-2757, option 3, x4562**

Parking Fee None

**LAKE ANZA - (510) 848-3385**

Beach Access Fee \$3.50 (age 16 – 61)  
\$2.50 (age 1 – 15)  
\$2.50 (seniors 62+ and disabled)  
FREE under 1 year

For Picnic Reservation Information, see #48. For Camping Fees, Group, Family, and Equestrian Rules, Regulations and Reservation Department Phone Numbers, see #47.

**TILDEN PONY RIDE** - temporarily closed

**TILDEN MERRY-GO-ROUND - (510) 524-6773**

\$2/ride (all ages)  
\$10/7-ride ticket book

**TILDEN STEAM TRAIN RIDE REDWOOD VALLEY RAILWAY - (510) 548-6100**

\$2/ride, children under 2 FREE  
\$8/5-ride family ticket

**TILDEN GOLF COURSE AMERICAN GOLF - (510) 848-7373**

|  | <u>Green Fees</u>                                 |
|--|---|
| Monday - Thursday                                      | <b>\$29</b>                                       |
| Twilight Rate  | <b>\$22</b>                                       |
| Super Twilight Rate/Back 9                             | <b>\$18</b>                                       |
| <b>Senior (Age 55+)</b>                                | <b>\$25</b>                                       |
| Friday   | <b>\$39</b>                                       |
| Twilight Rate  | <b>\$27</b>                                       |
| Super Twilight Rate                                    | <b>\$18</b>                                       |
| <b>Senior (Age 55+)</b>                                | <b>\$35</b>                                       |
| Weekends and Holidays                                  | <b>\$49</b>                                       |
| Twilight Rate  | <b>\$32</b>                                       |
| Super Twilight Rate                                    | <b>\$18</b>                                       |
| <b>Senior (Age 55+)</b>                                | <b>\$49</b>                                       |
| Early Bird Back 9                                      | <b>\$26</b>                                       |
| Monthly-Senior Ticket*                                 | <b>\$115</b>                                      |
| *(Must be a current member Senior Golf Club at Tilden) |   |
| Cart Rentals-per person                                | \$16/18 holes, <b>\$10/9 holes, \$10/twilight</b> |

# EAST BAY REGIONAL PARK DISTRICT

## Consolidated Fee Schedule

Effective January 1, 2011

### **TILDEN GOLF COURSE AMERICAN GOLF (continued)**

|  |             |
|--|-------------|
| Juniors (Age 17 and under)             | \$10        |
| <b>Senior (Age 55+)</b>                | <b>\$10</b> |
| Advanced Reservations-more than 7 days | \$5         |

### **30. ARCHERY RANGES**

For archery club membership information, contact:

|                  |                |
|------------------|----------------|
| Briones Archers: | (510) 724-3814 |
| Redwood Bowmen:  | (510) 530-0400 |

### **31. COMMEMORATIVE BENCH & PLAQUE - (510) 544-2510**

|                          |         |
|--------------------------|---------|
| Bench and 4" x 6" plaque | \$2,500 |
|--------------------------|---------|

### **32. COMMERCIAL PHOTOGRAPHY PERMIT - (510) 544-2200**

|                        |   |
|------------------------|---|
| Production Photography | \$165/hr                                |
|                        | \$750/half day                          |
|                        | \$1,250/day                             |
| Individual Photography | \$100/year (good from date of purchase) |
| Buildings              | Regular reservation fee applies.        |
| Set construction       | \$30 minimum                            |
| Vehicles               | \$9/day                                 |
| Animals                | \$9/day                                 |

**NOTE:** Must meet liability insurance requirements. Contact Public Affairs in advance for further information on how to obtain a permit. (Special conditions may apply.)

### **33. CONCERTS, SPECIAL CLASSES, CONFERENCES OR EVENTS**

The General Manager may set an appropriate fee per person or vehicle, depending on collection circumstances, to cover the District's direct costs, plus reasonable overhead.

### **34. DISABLED VETERANS AND FORMER PRISONERS OF WAR (POWs)**

At time of entry, Disabled Veterans and former POWs presenting the "Distinguished Veteran Pass" issued by California State Parks will receive a **free** day-use parking; veterans seeking eligibility must contact California State Parks to obtain the pass.

### **35. DOG FEES**

|   |             |
|---|-------------|
| Dog Fee (per day or overnight, charged at park) | \$2/per dog |
|---|-------------|

**NOTE:** Guide Dog/Service Dogs get in the park FREE with their companion. These may include K-9 Companions, Guide Dog for the Blind, Search & Rescue, or similar groups, etc.

### **ANNUAL DOG PERMITS - (510) 690-6508**

Annual Dog Permits are available through the Public Safety Department (*Fee Applies to four or more dogs*)

|   |       |
|---|-------|
| Private or Non-Profit Dog Walker (Individual) | \$ 25 |
| Private or Non-Profit Dog Walker (Household)  | \$ 40 |
| Professional Dog Walker (Annual)              | \$250 |
| Supplemental Permit (Annual)                  | \$100 |
| Duplicate Permit*                             | \$ 15 |

\*(Requires additional photograph of applicants)

# EAST BAY REGIONAL PARK DISTRICT

## Consolidated Fee Schedule

Effective January 1, 2011

### 36. **ENCROACHMENT PERMITS - (510) 544-2562**

### 37. **FISHING PERMITS - State Fishing License also required, except at Pt. Pinole Pier.**

Daily Fishing Access Permit \$5/day

(Not required at Antioch Pier, Big Break Pier or Pt. Pinole Pier)

Monies paid for this permit are placed in a fund which pays for restocking of fish and labor expenses related to the District's fishing program. Anglers 16 years and older must also have a California State Fishing License. All State Fish & Game laws are enforced in the parks. A Fishing Permit Meter is available at facilities where attendants are not present year-round.

### 38. **INTERPRETIVE PROGRAM FEES AND CHARGES - (510) 544-2551**

Alameda/Contra Costa County public school groups: FREE

Private schools, Non-District schools and other public or private groups: \$40/hour/District employee involved

NOTE: Organizations or Agencies - Fee for training staffs of public or private agencies or organizations shall consist of reimbursement of all staff wages, plus travel expenses and incidental costs incurred, plus 25% overhead cost. Fees for special programs may be charged as authorized by the General Manager and as set forth by Board policy.

### 39. **METAL DETECTOR PERMIT - I (888) EBPARKS, option 2, OR I (888) 327-2757, option 2**

Permit \$20/two-years

Permit is available by mail. Check or money order should be made out to EBRPD and mailed to the attention of Reservations Department.

### 40. **MOBILE FISH EXHIBIT OR MOBILE VISITOR CENTER USE FEE - (510) 544-2527**

\$200 - \$2,500

### 41. **NIKE CLASSROOM RENTAL - (510) 690-6500 - \$25/hr.**

### 42. **OUTDOOR RECREATION PROGRAM FEES AND CHARGES - (510) 544-2552**

Fees for Outdoor Recreation programs may be charged as authorized by the General Manager and as set forth by Board policy. Outdoor Recreation programs and fees can be referenced in the seasonal program brochure "Regional in Nature".

### 43. **PARKS EXPRESS TRANSPORTATION PROGRAM - (510) 544-2205**

Bus 56-84 passenger \$110/bus

### 44. **RENTAL FACILITIES - I (888) EBPARKS, option 2, OR I (888) 327-2757, option 2**

Rentals must be booked 30 days before event, unless approved by the Facilities Supervisor.

**BRAZILIAN ROOM in Tilden Park** - Open House most Tuesdays from 1 pm to 8 pm

| Times include set-up and clean-up:       | <u>2011</u>           | <u>2012</u>           |
|--|-----------------------|-----------------------|
| Friday evenings: 5 pm- midnight          | \$1,900/ 7 hrs        | \$1,900/ 7 hrs        |
| <b>12 hour rental – one event/day</b>    | <b>\$2,400/12 hrs</b> | <b>\$2,400/12 hrs</b> |
| Extra hour if available                  | \$250/extra hr        | \$250/extra hr        |
| Friday: 8 am – 4 pm                      | \$500/day rate        | \$500/date rate       |
| Saturday: 9 am – 4 pm or 5 pm – midnight | \$2,150/ 7 hrs        | \$2,150/ 7 hrs        |
| 12-hr rental – one event/day             | \$3,800/ 12 hrs       | \$3,800/ 12 hrs       |
| Extra hour if available on 12-hr rental  | \$250/extra hr        | \$250/extra hr        |

## EAST BAY REGIONAL PARK DISTRICT

### Consolidated Fee Schedule

Effective January 1, 2011

#### **BRAZILIAN ROOM in Tilden Park (continued)**

|   |                                   |                                  |
|---|-----------------------------------|----------------------------------|
| Sunday/Some Holidays: Nov – March<br>(One reservation per day)      | \$1,900/ 7 hrs<br>\$250/extra hr  | \$1,900/ 7 hrs<br>\$250/extra hr |
| Sunday/Some Holidays: April – Oct<br>9 am – 4 pm or 5 pm – midnight | \$2,150/ 7 hrs<br>\$3,800/ 12 hrs | \$2,150/ 7 hrs<br>\$3800/ 12 hrs |
| Extra hour if available on 12-hr rental                             | \$250/extra hr                    | \$250/extra hr                   |
| Monday through Thursday*<br>8 am – midnight                         | \$600/ 5 hrs<br>\$75/extra hr     | \$600/ 5 hrs<br>\$75/extra hr    |
| Monday through Thursday*<br>Special day rate: 8 am – 4 pm.          | \$300/day rate                    | \$300/day Rate                   |
| *Not available Open House Tuesdays                                  |                                   |                                  |

#### **Day Rate can add up to two hours at \$75/hour effective immediately**

|  |  |                |
|--|--|----------------|
| Two multiple days: Mon – Thurs, 8 am – 4 pm                      | \$275/day rate   | \$275/day rate |
| Three multiple days: Mon – Thurs, 8 am – 4 pm                    | \$250/day rate   | \$250/day rate |
| Out of District Additional Fee -<br>Cleaning and Damage Deposit: | Surcharge equal to 20% of room rental<br>\$200-\$1,000 | \$200-\$1,000  |

#### **Non-Catered Fee:**

|            |       |       |
|------------|-------|-------|
| Up to 7 pm | \$150 | \$150 |
| After 7 pm | \$600 | \$600 |

Non-Catered events not available on Friday, Saturday, Sunday, or major holidays. Times include set-up and clean-up.

|                                      |       |       |
|--------------------------------------|-------|-------|
| Overtime Hours – Late Load Out       | \$500 | \$500 |
| Audio/Visual System                  | \$75  | \$75  |
| Ice                                  | \$25  | \$25  |
| Telephone Land Line Use Fee          | \$50  | \$50  |
| Fireplace (converted to gas in 2010) | \$30  | \$30  |

#### **FERN COTTAGE in Kennedy Grove - 1 (888) EBPARKS, option 2 OR 1 (888) 327-2757, option 2**

|   | <u>2011</u>  | <u>2012</u>                   |
|---|--|-------------------------------|
| Friday Evenings   | \$350/ 5 hr min<br>\$50/extra hr                       | \$350/ 5 hrs<br>\$50/extra hr |
| Saturday/Sunday/Some Holidays                                   | \$350/ 5 hr min<br>\$50/extra hr                       | \$350/5 hrs<br>\$50/extra hr  |
| Weekday Evenings: Mon-Thurs                                     | \$250/ 5 hr min<br>\$50/extra hr                       | \$250/ 5 hrs<br>\$50/extra hr |
| Weekdays: Mon-Fri*, 8 am – 4 pm                                 | \$150/day rate   | \$150/day rate                |
| Two multiple days: weekdays, 8 am – 4pm                         | \$125/day rate   | \$125/day rate                |
| Three multiple days: weekdays, 8 am – 4pm                       | \$120/day rate   | \$120/day rate                |
| Out of District Additional Fee -<br>Cleaning and Damage Deposit | Surcharge equal to 20% of room rental<br>\$200-\$1,000 | \$200-\$1,000                 |

#### **Non-Catered Fee:**

|                              |       |       |
|------------------------------|-------|-------|
| Before 7 pm                  | \$100 | \$100 |
| After 7 pm                   | \$200 | \$200 |
| Overtime Hrs – Late Load Out | \$150 | \$150 |

\*Not available on Open House Mondays 10 am – 11:30 am

## EAST BAY REGIONAL PARK DISTRICT

### Consolidated Fee Schedule

Effective January 1, 2011

#### **SHORELINE CENTER at Martin Luther King Jr. Regional Shoreline - I (888) EBPARKS, option 2, OR I (888) 327-2757, option 2**

|  | <u>2011</u>                      | <u>2012</u>                      |
|--|----------------------------------|----------------------------------|
| Friday/Saturday/Some Holidays: 10 am – 11 pm | \$350/ 5 hr min<br>\$60/extra hr | \$350/ 5 hrs<br>\$60/extra hr    |
| Sunday/Some Holidays: 10 am – 10 pm          | \$350/ 5 hr min<br>\$60/extra hr | \$350/5 hr min<br>\$60/extra hr  |
| Weekday Evenings: Mon-Thurs, 8 am – 10 pm    | \$300/ 5 hr min<br>\$60/extra hr | \$300/ 5 hr min<br>\$60/extra hr |
| Weekdays: Mon-Fri, 8 am – 4 pm               | \$200/day rate                   | \$200/day rate                   |

#### **Day Rate can add up to two hours at \$60/hour effective immediately**

|  |                                       |                 |
|--|---------------------------------------|-----------------|
| Two multiple days: weekdays, 8 am – 4 pm   | \$185/day rate                        | \$185/day rate  |
| Three multiple days: weekdays, 8 am – 4 pm | \$175/day rate                        | \$175/day rate  |
| Out of District Additional Fee -           | Surcharge equal to 20% of room rental |                 |
| Cleaning and Damage Deposit                | \$200 - \$1,000                       | \$200 - \$1,000 |

#### Non-Catered Fee:

|                                |       |       |
|--------------------------------|-------|-------|
| Before 7 pm                    | \$100 | \$100 |
| After 7 pm                     | \$200 | \$200 |
| Overtime Hours – Late Load Out | \$150 | \$150 |

#### **TEMESCAL BEACH HOUSE - I (888) EBPARKS, option 2, OR I (888) 327-2757, option 2**

|  | <u>2011</u>  | <u>2012</u>  |
|--|--|--|
| Friday: 8 am – midnight<br>8 am – 4 pm         | \$1,100/ 8 hrs<br>\$400/day rate<br>\$150/extra hr | \$1,100/ 8 hrs<br>\$400/day rate<br>\$150/extra hr |
| Saturday/Some Holidays: 10 am – midnight       | \$1,500/ 8 hr min<br>\$150/extra hr                | \$1,500/ 8 hr min<br>\$150 extra hr                |
| Sunday: 10 am – 10 pm                          | \$1,100/ 8 hr min<br>\$150/extra hr                | \$1,100/ 8 hr min<br>\$150/extra hr                |
| Weekdays: Mon – Thurs, 8 am – 4 pm             | \$250/day rate                                     | \$250/day rate                                     |
| Weekday Evenings: Mon-Thurs, 8 am – 10 pm*     | \$450/ 5 hr min<br>\$75/extra hr                   | \$450/ 5 hr min<br>\$75/extra hr                   |
| Two multiple days, Mon – Thurs, 8 am – 4 pm*   | \$235/day rate                                     | \$235/day rate                                     |
| Three multiple days, Mon – Thurs, 8 am – 4 pm* | \$225/day rate                                     | \$225/day rate                                     |
| Cleaning and Damage Deposit                    | \$200-\$1,000                                      | \$200-\$1,000                                      |
| Telephone Land Line Fee                        | \$50   | \$50   |
| Out of District Additional Fee                 | Surcharge equal to 20% of room rental              |  |

#### **Non Catered not available on evening events at the Temescal Beach House, Non Catered events must end by 7 pm. Times include set-up and clean-up.**

#### Non-Catered Fee:

|                                |               |               |
|--------------------------------|---------------|---------------|
| Before 7 pm                    | \$150         | \$150         |
| After 7 pm                     | Not available | Not available |
| Overtime Hours – Late Load Out | \$300         | \$300         |
| Fireplace                      | \$20          | \$20          |

\*Open House 1<sup>st</sup> Tuesday of every month

# EAST BAY REGIONAL PARK DISTRICT

## Consolidated Fee Schedule

Effective January 1, 2011

### **TEMESCAL BEACH HOUSE (continued)**

#### **MULTIPLE DAY RENTALS**

Multiple day rentals can be split up if they are paid for at the same time and are within the days and hours stated for multiple rentals at respective facility.

#### **HOLIDAYS**

Holiday rates apply on: New Year's Day, Washington's Day, Memorial Day, 4<sup>th</sup> of July, Labor Day, Veteran's Day, Thanksgiving and Day After, Christmas Eve and Christmas Day.

#### **RENTAL FACILITY APPROVED CATERERS (CALL FOR INFORMATION)**

|                                  |                |
|----------------------------------|----------------|
| A.G. Ferrari                     | (800) 335-5090 |
| Ann Walker                       | (415) 460-9885 |
| The Arlington                    | (510) 525-2757 |
| Blue Heron Catering              | (510) 533-0781 |
| Carrie Dove Catering             | (415) 460-9995 |
| Culinary Excellence Catering     | (925) 947-1090 |
| Melons Catering                  | (650) 583-1756 |
| Miraglia Catering                | (510) 483-5210 |
| Royal Raspberry Catering         | (510) 538-8162 |
| Serves You Right                 | (510) 527-8809 |
| Schumann's Four Seasons Caterers | (650) 968-9308 |
| Trumpetvine Catering             | (510) 848-7268 |
| Wild Thyme Catering              | (925) 945-7939 |

#### **45. RESEARCH PERMITS - (510) 544-2340**

|                                 |             |
|---------------------------------|-------------|
| Graduate Students               | \$25/permit |
| Academic and agency researchers | \$50/permit |

#### **46. RICHARD TRUDEAU TRAINING CENTER: located at 11500 Skyline Blvd, Oakland, CA TO RESERVE call (510) 544-2102**

| Main Conference Room                        |              | Non Profit or In-District Rate |                      | For Profit or Out-of-District Rate |                 |                      |         |
|---|--------------|--------------------------------|----------------------|------------------------------------|-----------------|----------------------|---------|
|   |              | Minimum 2 Hours                | Each Additional Hour | 8 Hours                            | Minimum 2 Hours | Each Additional Hour | 8 Hours |
| Monday – Friday<br>7:00 am – 6:00 pm        | Capacity 130 | \$150                          | \$75                 | \$600                              | \$180           | \$90                 | \$720   |
| M-F/Weekends/Holidays<br>6:00 pm – 10:00 pm | Capacity 70  | \$180                          | \$90                 | \$720                              | \$220           | \$110                | \$880   |
| Consecutive Days (Each Day)                 |              |                                |                      | \$500                              |                 |                      | \$620   |
| Refundable Damage Deposit                   |              |                                |                      | \$250                              |                 |                      | \$250   |

| Either Conference Room #1 or #2 |                | Non Profit or In-District Rate |                      | For Profit or Out-of-District Rate |                 |                      |         |
|---------------------------------|----------------|--------------------------------|----------------------|------------------------------------|-----------------|----------------------|---------|
|                                 |                | Minimum 2 Hours                | Each Additional Hour | 8 Hours                            | Minimum 2 Hours | Each Additional Hour | 8 Hours |
| Monday – Friday                 | Capacity 15/19 | \$70                           | \$35                 | \$280                              | \$110           | \$55                 | \$440   |

# EAST BAY REGIONAL PARK DISTRICT

## Consolidated Fee Schedule

Effective January 1, 2011

|   |       |       |      |       |       |      |       |
|---|-------|-------|------|-------|-------|------|-------|
| 7:00 am – 6:00 pm                           |       |       |      |       |       |      |       |
| M-F/Weekends/Holidays<br>6:00 pm – 10:00 pm | 15/19 | \$110 | \$55 | \$440 | \$150 | \$75 | \$600 |
| Consecutive Days (Each Day)                 |       |       |      | \$180 |       |      | \$340 |
| Refundable Damage Deposit                   |       |       |      | \$250 |       |      | \$250 |

| Entire Building                             | Capacity | Non Profit or In-District Rate |                      | For Profit or Out-of-District Rate |                 |                      |         |
|---|----------|--------------------------------|----------------------|------------------------------------|-----------------|----------------------|---------|
|   |          | Minimum 2 Hours                | Each Additional Hour | 8 Hours                            | Minimum 2 Hours | Each Additional Hour | 8 Hours |
| Monday – Friday<br>7:00 am – 6:00 pm        | 164      | \$180                          | \$90                 | \$720                              | \$220           | \$110                | \$880   |
| M-F/Weekends/Holidays<br>6:00 pm – 10:00 pm | 70       | \$220                          | \$110                | \$880                              | \$260           | \$130                | \$1,040 |
| Consecutive Days (Each Day)                 |          |                                |                      | \$620                              |                 |                      | \$780   |
| Refundable Damage Deposit                   |          |                                |                      | \$250                              |                 |                      | \$250   |

**47. CAMPING RESERVATIONS – 1 (888) EBPARKS, option 2, OR 1 (888) 327-2757, option 2 OR reserve online at [www.ebparks.org](http://www.ebparks.org)**

Reservation Fee of \$8 will be added to each reservation.

Primitive Group Camping (Three or more youths to one adult):

|                    | <u>In-District</u> | <u>Out of District</u> |
|--------------------|--------------------|------------------------|
| 35 or fewer people | \$35               | \$70                   |
| 36 to 50 people    | \$50               | \$100                  |
| 51 to 75 people    | \$75               | \$150                  |
| 76 to 100 people   | \$100              | \$200                  |
| More than 100      | \$1/person         | \$2/person             |

Mixed Age & Adult Group Camping: two or fewer youths to one adult

|                    | <u>In-District</u> | <u>Out of District</u> |
|--------------------|--------------------|------------------------|
| 35 or fewer people | \$50               | \$100                  |
| 36 to 50 people    | \$75               | \$150                  |
| 51 to 75 people    | \$115              | \$225                  |
| 76 to 100 people   | \$150              | \$300                  |
| More than 100      | \$1.50/person      | \$3/person             |

Parking: One parking pass per five campers. Additional passes may be purchased for \$6/per vehicle - if space is available.

|                                   |                             |
|-----------------------------------|-----------------------------|
| <u>Developed Group Camp Sites</u> | \$75/night minimum          |
| (Puma Pt., Wild Turkey, Punta     | \$2/person, In-District     |
| Vaca-Within Family Campground)    | \$3/person, Out of District |

# EAST BAY REGIONAL PARK DISTRICT

## Consolidated Fee Schedule

Effective January 1, 2011

### **CAMPING RESERVATIONS (continued)**

#### Refundable Security/Damage Deposit for Developed and Primitive Group Camps

For youth groups greater than 100, for groups with a history of non-compliance of rules, and for mixed-age/adult groups a \$200 refundable deposit is required.

#### Equestrian Group Camping Fees

|  |                                      |
|--|--------------------------------------|
| Caballo Loco in Del Valle                    | \$200/night minimum.                 |
| Bort Meadow in Anthony Chabot                | If more than 11 rigs, \$18/rig/night |
| Es Anderson Camp in Tilden                   | \$120/night minimum.                 |
| Homestead Valley in Briones                  | More than 10 rigs, \$12/rig/night    |
| Sunol Corral in Sunol Regional Wilderness    | More than 10 rigs, \$12/rig/night    |
| Corral Camp at Las Trampas                   | More than 10 rigs, \$12/rig/night    |
| Caballo Loco, Del Valle— <u>Day Use Only</u> | \$12/rig, if not reserved overnight  |
| Reserved through Reservations Dept.          |                                      |
| Does not include parking or trailer fee.     |                                      |

### **DAY CAMP FEES**

| <u>Site Capacity</u> | <u>Non-Profit</u> | <u>For-Profit</u> |
|----------------------|-------------------|-------------------|
| 28                   | \$ 25/day         | \$ 30/day         |
| 40                   | \$ 30/day         | \$ 40/day         |
| 60                   | \$ 50/day         | \$ 60/day         |
| 80                   | \$ 60/day         | \$ 80/day         |
| 120                  | \$ 90/day         | \$120/day         |
| 160                  | \$120/day         | \$160/day         |
| 240                  | \$180/day         | \$240/day         |
| 280                  | \$210/day         | \$280/day         |
| 400                  | \$320/day         | \$400/day         |

Refundable Security/Damage Deposit                      \$150/per week

#### Family Camping/Booking Rules

- (1) Fifteen-day consecutive stay limit.
- (2) Must vacate site for a minimum of 48 hours before another campground period can begin.
- (3) Maximum of 30 days of camping per year in any one park unit.
- (4) When campground use low, Park Supervisor has the discretion of extending camper's stay. During high-use season, length of stay limit enforced.
- (5) Cancellations/changes to reservations made more than 3 days in advance will lose the \$8 reservation fee, but receive a refund of camping fees. Cancellations made less than 3 days in advance will lose the \$8 cancellation fee and the first night, but receive a refund of the remaining camping fee.
- (6) Cancellations of any days that are booked during the week proceeding a holiday weekend (Memorial Day, 4<sup>th</sup> of July, and Labor Day) are NOT refundable.

## EAST BAY REGIONAL PARK DISTRICT

### Consolidated Fee Schedule

Effective January 1, 2011

**48. PICNIC RESERVATIONS – I (888) EBPARKS, option 2, OR I (888) 327-2757, option 2**

A Reservation Fee of \$8 will be added to each reservation.

| <u>Site Capacity</u> | <u>Alameda/Contra Costa</u> |  | <u>Non-Residents</u> | <u>Security Deposit</u> |
|----------------------|-----------------------------|--|----------------------|-------------------------|
|                      | <u>County Residents</u>     |  |                      |                         |
| 35                   | \$ 55                       |  | \$ 75                | \$ 0                    |
| 50                   | \$ 75                       |  | \$ 115               | \$ 50                   |
| 75                   | \$ 120                      |  | \$ 175               | \$ 50                   |
| 100                  | \$ 160                      |  | \$ 225               | \$ 150                  |
| 150                  | \$ 240                      |  | \$ 325               | \$ 150                  |
| 200                  | \$ 315                      |  | \$ 425               | \$ 150                  |
| 300                  | \$ 470                      |  | \$ 650               | \$ 250                  |
| 350                  | \$ 545                      |  | \$ 750               | \$ 250                  |
| 500                  | \$ 775                      |  | \$1100               | \$ 250                  |
| *200 Pavilion        | \$ 420                      |  | \$ 575               | \$ 250                  |

\*Note: Pavilion Sheltered areas available at Quarry Lakes only.

NOTE: All reservations at Cull Canyon and Don Castro are charged at the resident rate to conform to the Davis-Grunsky Act under which the Park District leases and operates these facilities.

**PICNIC AREA REFUNDABLE SECURITY AND DAMAGE DEPOSIT**

This deposit is fully refundable if the area is left in good condition and regular servicing will make it ready for the next group to use. All or part of the security deposit may be forfeited if any part of the picnic rental contract is violated. The deposit may be retained for actual damages and also for staff time. Park staff will document in writing and/or with pictures any issue requiring the deposit to be retained.

**BEER & WINE PERMITS:** A fee of \$25 will be charged for a beer & wine permit in parks where alcohol is restricted to reserved picnic areas.

**MAXIMUM BOOKING WINDOW:** Alameda/Contra Costa County companies, organizations and individuals may make reservations beginning the first Monday in November. Those outside Alameda and Contra Costa counties may make reservations beginning the first Monday in February.

**EMPLOYEE DISCOUNT:** 50% discount on reservation picnic sites for District employees. Criteria: Reservation made no more than 90 days prior to date needed and used for employee family event. If more notice needed, full price must be paid. The \$8 service charge does not apply. Security and Damage deposit will apply.

**CANCELLATION POLICY:**

Cancellations made 30 days or more prior to the event will receive a 90% refund less \$8 service charge.

Cancellations made 15 days or more prior to the event will receive a 75% refund less \$8 service charge.

Cancellations made less than 15 days, but 7 days or more prior to the event, will receive a 50% refund less \$8 service charge.

Cancellations made less than 7 days prior to the event are not refundable unless the area is re-rented. If area is re-rented, you will receive a 50% refund less \$8 service charge.

**For each reservation change, \$8 service fee will be charged.**

**49. WEDDING SITES - I(888) EBPARKS, option 2 OR I (888) 327-2757, option 2**

Numerous wedding areas have been added in the parks. Rates will be based on the site capacity at the above listed picnic rates, see #45.

50. **CATERER/VEHICLE ACCESS PERMIT - I (888) EBPARKS, option 2, OR I (888) 327-2757, option 2**  
 Caterer/Vehicle Driving to site  
 \$75/DAILY PERMIT (must provide insurance), \$25 surcharge if less than 15 days notice  
 \$150/ANNUAL PERMIT (must provide insurance)  
 See Cancellation Policy #45
51. **INTERACTIVE PLAY EQUIPMENT PERMIT - I (888) EBPARKS, option 2, OR I (888) 327-2757, option 2**  
 \$75/Permit (must provide insurance)  
 \$25/each additional unit  
 \$45/electricity charge where available  
 \$25/Late Fee for less than 15-day notice  
 See Cancellation Policy #45
52. **AMPLIFIED SOUND PERMIT SECURITY DEPOSIT**  
 The rate is ten (10) times the reservation fee, with a \$1000 minimum. An Amplified Sound Permit may be issued in conjunction with a Special Event Permit or with a picnic reservation at Martin Luther King, Jr. Regional Shoreline only. Some or all of this deposit will be forfeited if damage to the site occurs or extra staff time is required.
53. **SPECIAL EVENT PERMIT FEE - (510) 544-2540**
- \$250 Permit Application Fee if complete packet is **received 60 or more days prior to event** (includes \$100 non-refundable/non-transferable administrative fee applicable even if event is not approved by District staff or event is cancelled by applicant. For all other types of special event permits listed below, the non-refundable/non-transferable administration fee is \$50).
  - \$100 Late Fee: If complete application packet is **received less than 60 days** prior to event (not applicable to weekday cross country meets or Non-District fee-based programs).
  - Low Impact Event Permit Fee: \$50/event (events using a small section of trail, having “low impact” on District parkland)
  - Weekday School-Sponsored Cross Country Meets: \$50/day (normal fees apply for weekend events). Busload and athlete vehicle entry fees will not be charged for school weekday and weekend cross country meets with a Special Event Permit.
  - **Day Camp Operation Permit: \$50/year**
  - Application Fee for Non-District fee-based programs that utilize District parkland and trail systems:
 

|                                     |  |
|-------------------------------------|--|
| Non-profit (501-3C) Organization:   | \$50/course, OR 10% of gross revenue, whichever is greater |
| Public Agencies:                    | \$50/course, OR 10% of gross revenue, whichever is greater |
| Individual & For-Profit Businesses: | \$50/course. OR 20% of gross revenue, whichever is greater |
  - Vendor Permit: \$50/event or 10% of gross sales/**event** (t-shirts, food, drinks, etc.), whichever is greater. Park District staffing required as a permit condition – (See Administration Fee Schedule)
  - **Annual Permit Application Fee for athletic or “boot camp” classes: \$250/year for authorization to conduct classes on non-holiday weekdays, during non-peak hours. Late fee applies as specified above.**
  - Staffing fees for Mountain Bike, Swim, Duathlon, or Triathlon events will be either ‘a’ or ‘b’, whichever is greater:
    - a) The sum of all staffing fees (i.e. lifeguards, rangers, public safety officers, firefighters, etc.), OR

**53. SPECIAL EVENT PERMIT FEE (continued)**

b) Total fee based per participant as follows. Report on event attendance required after event. Applicant will be billed for any additional staffing fees above those already paid.

- \$2/person for mountain bike events
- \$4/person for swim or duathlon event
- \$6/person triathlon

- SANITATION TRAILER: \$132/one day or \$182/weekend
- DELUXE TRAILER: \$182/one day or \$257/weekend

**54. NON-DISCRIMINATION POLICY ON THE BASIS OF DISABILITY**

- A. The East Bay Regional Park District does not discriminate on the basis on disability in the admissions or access to, or treatment in, its programs or activities.
- B. Mike Anderson, Assistant General Manager, Planning, has been designated to coordinate compliance with the nondiscrimination requirements contained in the Department of Justice regulations implementing Subtitle A of Title II of the Americans with Disabilities Act (42 U.S.C.12131), which prohibits discrimination on the basis on disability by public agencies. Mr. Anderson may be reached at:

Mike Anderson, AGM, Planning  
East Bay Regional Park District, P.O. Box 5381, Oakland, CA 94605  
(510) 544-2303 (Voice) and (510) 633-0460 (TDD)

**55. FEE WAIVER PROCEDURE**

In-District groups serving the disabled, seniors and low income individuals that cannot afford fees, may be granted discounted or free use by sending a written request on their agency letterhead at least two weeks prior to expected park visit to:

John Escobar, AGM, Operations  
East Bay Regional Park District  
P.O. Box 5381, Oakland, CA 94605

Please include the following information:

1. Facility, activity, or park fee requested to be reduced or waived.
2. Date(s) for which discount or fee waiver is requested.
3. Size of group, with breakdown of number of adults and youths.
4. Reason why normal fee cannot be paid.
5. Security and Damage Deposits, *if applicable*, will not be waived,

If granted, a written fee waiver permit will be issued.

- A. In-District school groups visiting the Regional Parks for an educational program, either with a District naturalist or on their own, will have their parking fees waived per existing approval of the Board of Directors.
- B. The Board authorizes the General Manager to adjust fees as he deems appropriate for promotional programs to increase public use. Such waivers shall be reported to the Board Operations Committee on a quarterly basis.
- C. In-District school groups visiting the Regional Parks for scheduled Cross Country meets with a special event permit will have their bus parking fees waived per existing approval.

**56. OCCASIONAL PUBLIC USE OF DISTRICT FACILITIES**

For facilities rented to the public on an occasional basis only, the AGM of Operations may establish a fee for use that is comparable to other District facilities. This applies for facilities (such as the Botanic Garden or Tilden EEC classroom) not intended for frequent public rental. However, under certain circumstances these facilities may be used as part of a Special Use or Special Event Permit.

**57. CAMP ARROYO – YMCA (925) 371-8401, Call for Reservations**

Camp Arroyo facilities rental and environmental education programs are managed by YMCA of the East Bay. See attached fee schedule. For more information, please contact them directly.

Tel: (925) 371-8401 Fax: (925) 455-7977 Website: <http://arroyo.ymcaeastbay.org>  
5535 Arroyo Road, Livermore, CA 94550 Email: [camparroyo@ymcaeastbay.org](mailto:camparroyo@ymcaeastbay.org)

**YMCA – CAMP ARROYO - PRICING**

The price structure for Outdoor Environmental Education programming will be as follows:

| OEE Student Rates* | Fall 2010 – Spring 2011 | Fall 2011 – Spring 2012 |
|--------------------|-------------------------|-------------------------|
| 3 day              | \$202                   | \$205                   |
| 4 day              | \$233                   | \$236                   |
| 5 day              | \$264                   | \$268                   |

YMCA will continue to give an additional 10% discount for chaperones and teachers of schools that book for five days.

| Conference Rates*   | Fall 2010 – Spring 2011 | Fall 2011 – Spring 2012 |
|---------------------|-------------------------|-------------------------|
| 1 night (3 meals)   | \$ 89                   | \$ 91                   |
| 2 nights (6 meals)  | \$167                   | \$169                   |
| 3 nights (9 meals)  | \$240                   | \$244                   |
| 4 nights (12 meals) | \$319                   | \$323                   |
| 5 nights (15 meals) | \$398                   | \$404                   |

6 nights – 7 nights will be increased in line with these changes as applicable.

\*YMCA will continue to offer a 5% discount for groups 100+ and a 10% discount for non-profits.

Daytime Use Fees:

|                    |  |
|--------------------|--|
| Wild Turkey Lodge: | \$ 500 (Up to three hours)                       |
|                    | \$ 900 (Up to six hours)                         |
|                    | \$1,000 (Wedding, Anniversary, or Special Event) |
| Meadow Rental Fee: | \$ 800 for up to six hours                       |

**58. REGIONAL PARKS FOUNDATION MEMBERSHIP PROGRAM (510) 544-2203**

This program and its fees are set and adjusted by the Regional Parks Foundation Board of Directors. Basic membership packages offer a number of benefits including unlimited day-use parking and free swimming during the swim season.

- Resident designates rates for those that reside inside Alameda or Contra Costa Counties
- Non-Resident designates rates for those that reside outside Alameda or Contra Costa Counties

## BASIC MEMBERSHIP PACKAGES

### Individual Membership

(Good for one person only)

|   | <u>Resident</u> | <u>Non Resident</u> |
|---|-----------------|---------------------|
| Regular                                     | \$50            | \$65                |
| Senior (62 years or older)                  | \$40            | \$65                |
| Senior Partner Pass.                        | \$10            | \$10                |
| Disabled Person                             | \$40            | \$65                |
| Student (must be full-time)                 | \$40            | \$65                |
| Regular Angler                              | <b>\$290</b>    | <b>\$375</b>        |
| Senior/Disabled Person<br>Or Student Angler | <b>\$175</b>    |                     |

### Family Membership

(Good for up to 2 named adults and 4 children, 2-17 years)

|                            | <u>Resident</u> | <u>Non Resident</u> |
|----------------------------|-----------------|---------------------|
| Regular                    | \$95            | \$125               |
| Senior (62 years or older) | \$80            | \$125               |
| Disabled                   | \$80            | \$125               |
| Student                    | \$80            | \$125               |

(Students must be full-time  
AND head of household)

### Add-On Park District Permits (permits are good for one year and must accompany a Basic Membership Package)

|  | <u>Resident</u> | <u>Non-Resident</u> |
|--|-----------------|---------------------|
| Additional Dog Pass (One dog per additional pass.)   | \$25            | \$25                |
| Additional Parking Permit (One car per additional permit.)<br>(for teens 16-17 only who are part of a Family Membership) | \$25            | \$25                |
| Additional Children to a Family Membership Package<br>(Does not include extra parking permit)                            | \$10/child      | \$10/child          |
| Horse Trailer Permit   | <b>\$45</b>     | <b>\$55</b>         |
| Senior, Disabled Person or Student Boat Launching Permit   | <b>\$45</b>     | <b>\$95</b>         |
| Regular Boat Launching Permit  | <b>\$80</b>     | <b>\$95</b>         |
| Annual Invasive Quagga Mussel Boat Inspection Permit   | \$40/boat       | \$40/boat           |
| Senior, Disabled Person or Full-Time Student Fishing Permit<br>(One permit per person. Non-transferable)                 | \$120/person    | \$350/person        |
| Fishing Permit (Non-Senior, one permit per person, Non-transferable)   | \$255/person    | \$350/person        |

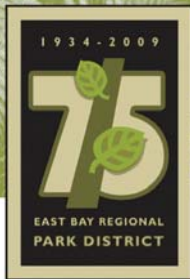
## 59. SWIM FACILITIES

- |   |  |
|---|--|
| <ul style="list-style-type: none"> <li>• <b>Contra Loma</b></li> <li>• <b>Cull Canyon</b></li> <li>• <b>Del Valle</b></li> <li>• <b>Diablo Foothills</b></li> </ul> | <ul style="list-style-type: none"> <li>• <b>Don Castro</b></li> <li>• <b>Lake Anza</b></li> <li>• <b>Shadow Cliffs</b></li> <li>• <b>Temescal</b></li> </ul> |
|---|--|

Out of season private Pool Rental – 2 hour minimum, includes lifeguard service.

| GROUP SIZE | RATE  | ADD'L HR |
|------------|-------|----------|
| 1 – 50     | \$225 | \$75     |
| 51 – 100   | \$275 | \$100    |
| 101 – 150  | \$325 | \$125    |
| 151 - 200  | \$375 | \$150    |
| 201 - 250  | \$425 | \$175    |
| 251 - 300  | \$475 | \$200    |
| 301 - 350  | \$525 | \$225    |
| 351 - 400  | \$575 | \$250    |
| 401 -450   | \$625 | \$275    |
| 451 – 500  | \$675 | \$300    |

DRAFT



2950 PERALTA OAKS COURT P.O. BOX 5381 OAKLAND CALIFORNIA 94605-0381  
T. 1 888 EBPARKS F. 510 569 4319 TDD. 510 633 0460 WWW.EBPARKS.ORG

**2:00 p.m. Item**

**TO:** Board Operations Committee  
**FROM:** John M. Escobar, AGM, Operations  
**DATE:** November 10, 2010  
**SUBJECT: Civicorps Recycling Program**

---

Civicorps is now processing recycled beverage containers from six East Bay Regional Park District units on a contract basis. At the November 10<sup>th</sup> Committee meeting, Bruce Groulx, Civicorps Recycling Coordinator, will present an overview of the program and their processing facilities in Oakland.

Attachment

---

Board of Directors

Doug Siden  
President  
Ward 4

Beverly Lane  
Vice-President  
Ward 6

Carol Severin  
Treasurer  
Ward 3

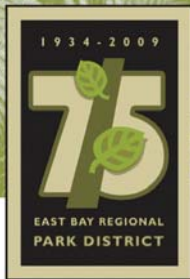
John Sutter  
Secretary  
Ward 2

Whitney Dotson  
Ward 1

Ted Radke  
Ward 7

Ayn Wieskamp  
Ward 5

Pat O'Brien  
General Manager



2950 PERALTA OAKS COURT P.O. BOX 5381 OAKLAND CALIFORNIA 94605-0381  
 T. 1 888 EBPARKS F. 510 569 4319 TDD. 510 633 0460 WWW.EBPARKS.ORG

**2:20 p.m. Item**

**TO:** Board Operations Committee

**FROM:** Mimi Waluch, Revenue and Administration Manager

**DATE:** November 10, 2010

**SUBJECT: Review of New Concessionaire Agreement: Action Vending**

---

In 1996, the District began transitioning to the use of vending machine service at seasonal swim area locations in lieu of on-site concessionaire-run snack stands at Roberts, Cull Canyon, Lake Anza, Don Castro, Lake Temescal, Contra Loma and Quarry Lakes. Most recently, Lake Anza and Contra Loma transitioned back to the more traditional concessionaire-run snack stand venue. However two employee locations were added to the vending service agreement in recent years: Peralta Oaks Administration Building and Public Safety Headquarters.

On June 1, 2010, the District issued a Request for Proposals (RFP) seeking an experienced operator to maintain and supply vending machine services at multiple seasonal swim locations and year-round employee locations for beverage and snack products. Fifteen proposal packets were requested, resulting in one submittal from the current operator, Action Vending, also known as North County Vending.

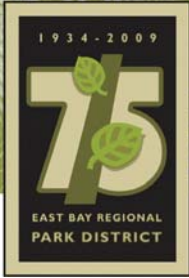
District staff reviewed the proposal and defined expectations of the concession, as well as Action Vending's acceptance of the District's concessionaire agreement requirements. Action Vending met all of the criteria in the RFP, and staff is recommending the selection of Action Vending as the concessionaire for snack and beverage vending service at five seasonal swim locations and two employee locations.

Action Vending has been working to improve its healthy foods vending line based on research by the National Consensus Panel of School Nutrition of the California Center for Public Health Advocacy. We will continue with an 80% healthy vending program and gradually increase products offering a healthier choice selection up to 90%.

Staff recommends that the Board Operations Committee approve and recommend to the full Board a three-year concession agreement, with one additional three-year option period, with Action Vending, also known as North County Vending, to operate the District-wide vending machine concession. There is no cost to the District for this action and the District can expect revenue of up to \$3,500 annually, representing 18% of gross revenue for all park locations and 6.5% of gross revenue for employee locations.

Board of Directors

|                                   |  |                                      |                                    |                          |                     |                        |                                |
|-----------------------------------|--|--------------------------------------|------------------------------------|--------------------------|---------------------|------------------------|--------------------------------|
| Doug Siden<br>President<br>Ward 4 | Beverly Lane<br>Vice-President<br>Ward 6 | Carol Severin<br>Treasurer<br>Ward 3 | John Sutter<br>Secretary<br>Ward 2 | Whitney Dotson<br>Ward 1 | Ted Radke<br>Ward 7 | Ayn Wieskamp<br>Ward 5 | Pat O'Brien<br>General Manager |
|-----------------------------------|--|--------------------------------------|------------------------------------|--------------------------|---------------------|------------------------|--------------------------------|



2950 PERALTA OAKS COURT P.O. BOX 5381 OAKLAND CALIFORNIA 94605-0381  
T. 1 888 EBPARKS F. 510 569 4319 TDD. 510 633 0460 WWW.EBPARKS.ORG



**2:35 p.m. Item**

**TO:** Board Operations Committee  
**FROM:** Sylvia Pulido, Acting Revenue Analyst  
**DATE:** November 10, 2010  
**SUBJECT:** **Annual Review of Fee Schedule: 2011**

---

The Board Operation Committee reviews the Fee Schedule each year. During this review process, concessionaires and staff make recommendations for changes based on price comparisons of similar facilities operated by other agencies in the area. To address Committee member questions and concerns, and to provide sufficient opportunities for public comment, recommended Fee Schedule changes are addressed by the Board Operations Committee at two consecutive meetings prior to making a Committee recommendation to the full Board. **Changes from October 21, 2010 meeting comments and review are included within this report in bold font.** Staff is seeking the Board Operations Committee's recommendation to the full Board of the attached changes to the 2011 Fee Schedule.

Listed below are the requested changes to the Park Operations Fees and Charges for the 2011 season. This memorandum contains only the proposed changes for 2011. All others fees and charges will remain the same. There are relatively few changes being requested this year. In 2010, it is anticipated that Concessionaire operations will generate **\$1,044,000** in revenue. **Public Use Fees will generate approximately \$5,285,000 District wide.** The requested Fee Schedule changes for 2011 should result in an increase of **\$15,550** in concessionaire revenue. Additionally, Public Use Fee recommendations will result in an increase of **\$72,170.**

**Special Notes:**

With the failure of Proposition 21 to gain voter approval, the District will continue to charge Board approved Parking/Entry fees at Del Valle and Crown Beach in 2011.

Staff recently learned that Ardenwood Affairs food service, wedding, and picnic concessionaire at Ardenwood Historic Farm will end all services at the Farm on December 31, 2010. Prior to reaching this decision to end operations at the Farm, Ardenwood Affairs had booked 17 weddings for 2011 starting in May. District staff has been in contact with caterers from our current approved list. Many have expressed interest in providing services to the planned weddings at Ardenwood. Ardenwood Affairs has agreed to put the District in contact with the organizers of the 17 weddings. It is the staff's intention to honor the reservation dates as booked by the wedding organizers as a facility rental, and put them in contact with the approved caterers to provide necessary food service. Fees charged for the facility rental will be based on the 2010 Ardenwood Affairs facility price schedule included in the Fee Schedule for 2011. The café at Ardenwood will be closed for renovation for 2011. Staff will also be working in 2011 to determine the best operational model for future Ardenwood food service operations. Special event food service needs for 2011 will likely be provided by a variety of vendors.

**CONCESSIONAIRE FEE REQUESTS**

I. Sunrise Mountain Sports (Del Valle Regional Park)

Concessionaire would like to make the following changes to their half-day and full-day lessons:

| SERVICE                               | 2010 RATE     | 2011 RATE      | % CHANGE | LAST CHANGE |
|---------------------------------------|---------------|----------------|----------|-------------|
| Introduction to Recreational Kayaking | \$55/half-day | \$ 59/half-day | 7%       | 2006        |
| Re-Entry Techniques                   | \$55/half-day | \$ 59/half-day | 7%       | 2006        |
| Basic Sea Kayaking                    | \$85/day      | \$ 89/day      | 5%       | 2006        |

Comparisons were made with California Kayak Rentals, US Sports, Adventure Rents, and Outback Adventure. Concessionaire reports these proposed increases are reasonable and compatible with lesson rates in similar programs. If the proposed fee changes are approved, revenue to the Park District will increase by approximately \$450.

## 2. YMCA – Camp Arroyo (Del Valle Regional Park)

Concessionaire proposes the following changes for Outdoor Environmental Education program rates at Camp Arroyo:

| SERVICE          | Fall 2010 – Spring 2011 | New Rate - Fall 2010-Spring 2011 | Fall 2011 – Spring 2012 | % CHANGE | LAST CHANGE |
|------------------|-------------------------|----------------------------------|-------------------------|----------|-------------|
| Student Rates    |                         |                                  |                         |          |             |
| 3 Day            | \$199                   | \$202                            | \$205                   | 1.5%     | 2010        |
| 4 Day            | \$229                   | \$233                            | \$236                   | 1.7%     | 2010        |
| 5 Day            | \$259                   | \$264                            | \$268                   | 1.9%     | 2010        |
| Conference Rates |                         |                                  |                         |          |             |
| 1 Night          | \$88                    | \$89                             | \$91                    | 1.1%     | 2010        |
| 2 Nights         | \$164                   | \$167                            | \$169                   | 1.8%     | 2010        |
| 3 Nights         | \$236                   | \$240                            | \$244                   | 1.7%     | 2010        |
| 4 Nights         | \$313                   | \$319                            | \$323                   | 1.9%     | 2010        |
| 5 Nights         | \$391                   | \$398                            | \$404                   | 1.8%     | 2010        |

Comparisons were made with other YMCA camps and United Camps, Conferences and Retreats. If the proposed fee changes are approved, revenue to the Park District may increase by approximately \$11,300.

## 3. Mudpuppy’s Tub & Scrub (Point Isabel Regional Park)

Concessionaire would like to make the following changes in rates for dog wash:

| SERVICE               | 2010 RATE   | 2011 RATE   | % CHANGE  | LAST CHANGE |
|-----------------------|---|---|-----------|-------------|
| Basic Wash (by size)  | \$20 (small), \$25 (medium), \$30 (large), \$35 (extra large) | \$21 (small), \$26 (medium), \$31 (large), \$36 (extra large) | 3% - 5%   | 2008        |
| Wash with Nails       | \$25 (small), \$30 (medium), \$35 (large), \$40 (extra large) | \$26 (small), \$31 (medium), \$36 (large), \$41 (extra large) | 2.5% - 4% | 2008        |
| Wash with Flea Dip    | \$25 (small), \$30 (medium), \$35 (large), \$40 (extra large) | \$26 (small), \$31 (medium), \$36 (large), \$41 (extra large) | 2.5% - 4% | 2008        |
| Wash with Conditioner | \$23 (small), \$28 (medium), \$33 (large), \$38 (extra large) | \$26 (small), \$31 (medium), \$36 (large), \$41 (extra large) | 8% - 13%  | 2008        |
| Self-Serve Wash       | \$11  | \$15  | 36%       | 2008        |
| Add-on: Conditioner   | \$3   | \$5   | 66%       | 2008        |
| Blow-Dry              | \$5   | \$7   | 40%       | 2008        |

Comparisons were made with PETCO in El Cerrito, which offers the closest bath only services in the area. Most others are grooming facilities. Fee increases are due to improved facility and extended hours since last price increase. Overall operating costs have increased over 10%. If the proposed fee changes are approved, revenue to the Park District will increase by approximately \$ 2,500.

4. California Splash II (Shadow Cliffs Regional Park)

Concessionaire proposes the following changes in rates for waterslides at Shadow Cliffs:

| SERVICE                 | 2010 RATE | 2011 RATE | % CHANGE | LAST CHANGE |
|-------------------------|-----------|-----------|----------|-------------|
| Waterslides – ½ Day Use | \$14      | \$13.95   | ↓ 0.3%   | 2010        |

Comparisons were made with Waterworld California in Concord and Aqua Adventure Water Park in Fremont. Concessionaire requests the lowered rate for advertisement purposes, which would have very little impact on revenue. If the proposed fee change is approved, revenue to the Park District may decrease by approximately \$100.

5. Tilden Golf Course American Golf (Tilden Regional Park)

Concessionaire proposes the following changes in rates for green fees and golf cart rentals at American Golf at Tilden:

| SERVICE                       | 2010 RATE   | 2011 RATE   | % CHANGE | LAST CHANGE |
|-------------------------------|-------------|-------------|----------|-------------|
| Green Fees: Monday – Thursday | \$35        | \$29        | ↓ 17%    | 2010        |
| Twilight Rate                 | \$25        | \$22        | ↓ 12%    | 2010        |
| Super Twilight Rate/Back 9    | \$19        | \$18        | ↓ 5%     | 2010        |
| Senior (Age 55+)              | n/a         | \$25        | 0%       | new         |
| Friday: Super Twilight Rate   | \$19        | \$18        | ↓ 5%     | 2010        |
| Senior (Age 55+)              | n/a         | \$35        | 0%       | new         |
| Weekends & Holidays           | \$59        | \$49        | ↓ 17%    | 2010        |
| Super Twilight Rate           | \$19        | \$18        | ↓ 5%     | 2010        |
| Senior (Age 55+)              | n/a         | \$49        | 0%       | new         |
| Monthly - Senior Ticket       | \$105       | \$115       | 9.5%     | 2010        |
| Cart Rentals – 9 holes        | \$9/person  | \$10/person | 11%      | 2010        |
| Cart Rentals - Twilight       | \$12/person | \$10/person | ↓ 17%    | 2010        |
| Juniors (Age 17 and under)    | \$7         | \$10        | 43%      | 2007        |
| Senior (Age 55+)              | n/a         | \$10        | 0%       | new         |

Comparisons were made with Chuck Corica in Alameda, Monarch Bay in San Leandro, Franklin Canyon in Hercules, Las Positas in Livermore, Deer Ridge, and Shadow Lakes, both in Brentwood, and Poppy Ridge in Livermore. Concessionaire proposes the decrease in rates could attract additional number of rounds for net increase in revenue. If the proposed fee changes are approved, revenue to the Park District will increase by approximately \$1,400.

PUBLIC USE FEE RECOMMENDATIONS

6. FACILITY RENTALS – Since bookings are accepted one-year in advance, listed are the current rates for 2011, which have booked this year; and the new rate for 2012, which will begin booking in January. Staff recommends changing the fees and adjusting time tables as follows:

Fern Cottage (Kennedy Grove Regional Park)

| SERVICE                                   | Pre-approved 2011 RATE | New 2011 RATE | 2012 RATE   | % CHANGE | LAST CHANGE |
|---|------------------------|---------------|-------------|----------|-------------|
| Friday Evenings Extra Hour                | \$70/hr                | \$ 50/hr      | \$ 50/hr    | ↓ 29%    | 2010        |
| Saturday/Sunday/Some Holidays: Extra Hour | \$70/hr                | \$ 50/hr      | \$ 50/hr    | ↓ 29%    | 2009        |
| Weekday Evenings: Mon-Thurs               | \$300/ 5 hr            | \$250/ 5 hr   | \$250/ 5 hr | ↓ 17%    | 2010        |
| Extra Hour                                | \$60/hr                | \$50/hr       | \$50/hr     | ↓ 17%    | 2010        |
| Weekdays: Mon-Fri, 8am – 4pm              | \$200/day              | \$150/day     | \$150/day   | ↓ 25%    | 2009        |

|  |             |               |               |       |      |
|--|-------------|---------------|---------------|-------|------|
| Two Multiple Days: Weekdays 8am- 4pm   | \$185/day   | \$125/day     | \$125/day     | ↓ 32% | 2010 |
| Three Multiple Days: Weekdays 8am -4pm | \$175/day   | \$120/day     | \$120/day     | ↓ 29% | 2006 |
| Cleaning and Damage Deposit            | \$200-\$500 | \$200-\$1,000 | \$200-\$1,000 | 100%  | 2010 |

If the proposed fee changes are approved, revenue to the Park District will decrease by approximately \$770.

Brazilian Room (Tilden Regional Park)

| SERVICE                | 2011 RATE | 2012 RATE | % CHANGE | LAST CHANGE |
|------------------------|-----------|-----------|----------|-------------|
| Friday: 12 Hour Rental | \$ 2400   | \$ 2400   | 0%       | new         |

The new fee has the potential to make the Brazil Room more attractive and encourage more 12-hour rentals on Fridays.

Shoreline Center (Martin Luther King Jr. Regional Shoreline)

| SERVICE  | Pre-approved 2011 RATE | New 2011 RATE | 2012 RATE | % CHANGE | LAST CHANGE |
|--|------------------------|---------------|-----------|----------|-------------|
| Friday/Saturday/Sunday/Some Holidays: Extra Hour | \$70/hr                | \$60/hr       | \$60/hr   | ↓ 14%    | 2010        |
| Sunday/Some Holidays: Extra Hour                 | \$70/hr                | \$60/hr       | \$60/hr   | ↓ 14%    | 2010        |

Due to the weak economy, staff requests not to increase the extra hour rate and remain at the 2010 level. Revenue for the Park District will decrease by approximately \$90, but this price reduction will encourage extra hour rentals.

All rental facility comparisons were made with various sites including the Dunsmuir Carriage House, Hacienda de las Flores, Hacienda Pavilion, Piedmont Center, Tilden Room at UCB, Camellia Room at Heather Farms, and Marin Conference Center. If the proposed fee changes are approved, revenue to the Park District will decrease by approximately \$860.

7. OUT OF SEASON PRIVATE POOL AND SWIM AREA RENTAL

Private Pool Rental – 2-hour minimum, includes lifeguard service.

| Out of season private pool rental with lifeguard service: Roberts and Diablo Foothills/Castle Rock   |                 |                           |                           |               |               |           |             |
|--|-----------------|---------------------------|---------------------------|---------------|---------------|-----------|-------------|
| 2010 GROUP SIZE  | 2011 GROUP SIZE | 2010 RATE (First two hrs) | 2011 RATE (First two hrs) | 2010 ADD'L HR | 2011 ADD'L HR | % CHANGE  | LAST CHANGE |
| 1 – 75   | 1 – 50          | \$150                     | \$225                     | \$50          | \$75          | 50%       | 2004        |
| 76 – 125   | 51 – 100        | \$200                     | \$350                     | \$75          | \$100         | 34% - 38% | 2004        |
| 126 – 150  | 101 – 150       | \$250                     | \$325                     | \$100         | \$125         | 25% - 30% | 2004        |
|  |                 |                           |                           |               |               |           |             |
| Out of season swim area private rental with lifeguard service: Cull Canyon, Contra Loma, Quarry Lakes, Lake Anza, Temescal, Shadow Cliffs, Del Valle |                 |                           |                           |               |               |           |             |
| 2010 GROUP SIZE  | 2011 GROUP SIZE | 2010 RATE (First two hrs) | 2011 RATE (First two hrs) | 2010 ADD'L HR | 2011 ADD'L HR | % CHANGE  | LAST CHANGE |
| 1 – 50   | 1 – 50          | new                       | \$225                     | \$50          | \$75          | n/a       | new         |
| 51 – 100   | 51 – 100        | new                       | \$275                     | \$75          | \$100         | n/a       | new         |
| 101 – 150  | 101 – 150       | new                       | \$325                     | \$100         | \$125         | n/a       | new         |

|           |           |     |       |       |       |     |     |
|-----------|-----------|-----|-------|-------|-------|-----|-----|
| 151 - 200 | 151 - 200 | new | \$375 | \$125 | \$150 | n/a | new |
| 201 - 250 | 201 - 250 | new | \$425 | \$150 | \$175 | n/a | new |
| 251 - 300 | 251 - 300 | new | \$475 | \$175 | \$200 | n/a | new |
| 301 - 350 | 301 - 350 | new | \$525 | \$200 | \$225 | n/a | new |
| 351 - 400 | 351 - 400 | new | \$575 | \$225 | \$250 | n/a | new |
| 401 - 450 | 401 - 450 | new | \$625 | \$250 | \$275 | n/a | new |
| 451 - 500 | 451 - 500 | new | \$675 | \$275 | \$300 | n/a | new |

In 2010, the shortened swim season led to approximately 5 weeks of private pool and swim area rental capacity. A trial rate structure was designed to allow the traditional user groups access to swim at the closed facilities. In an effort to maintain a reservable and accountable program for school and other youth groups during this time, the proposed rates capture both a portion of costs related to actual lifeguard to user ratio and facility maintenance cost.

Due to the restructuring of lifeguard to user ratios recommended by regulatory agencies and increase to site maintenance and operational cost, the graduated rate increases are recommended by both Aquatics and Operations departments. These rates do not reflect actual costs related to overhead and maintaining facilities.

Swim facility comparisons were made with various sites including City of Berkeley, Walnut Creek Larkey Swim Center, City of El Cerrito, and Hayward Plunge. If the proposed fee changes are approved, revenue to the Park District will increase by approximately \$10,000.

#### 8. PARK SPECIFIC CHANGES

##### ANTHONY CHABOT CAMPGROUND

Staff recommends increasing the fees as follows:

| SERVICE                                      | 2010 RATE  | 2011 RATE               | % CHANGE | LAST INCREASE |
|--|------------|-------------------------|----------|---------------|
| Family Camping: Walk-in/Drive-in Tent Site   | \$20/night | \$22/night              | 10%      | 2009          |
| Hook-up Sites: Sewer, Water, and Elec-30 amp | \$28/night | \$30/night              | 7%       | 2009          |
| Shower Fee – non campers                     | \$2        | delete                  | n/a      | n/a           |
| Amphitheatre                                 | \$50       | delete                  | n/a      | n/a           |
| Backpacking Fee ( <b>use of group camp</b> ) | n/a        | <b>\$5/person/night</b> | new      | new           |

If the proposed fee changes are approved, revenue to the Park District will increase by approximately \$3,550.

##### ARDENWOOD HISTORIC FARM

Staff recommends increasing the fees as follows:

| SERVICE                      | 2010 RATE | 2011 RATE | % CHANGE | LAST INCREASE |
|------------------------------|-----------|-----------|----------|---------------|
| Special Event Fee (all ages) | \$5-\$20  | \$5-\$25  | 0% - 25% | 2004          |

Special Event entrance fees vary depending on the event. In particular, the Cajun/Zydeco Festival entrance fee at the Ardenwood gate has been \$20 for the past five or six years. An increase in this fee would help offset the rising costs of entertainment and staging. If the proposed fee change is approved, revenue to the Park District will increase by approximately \$10,000.

**Board requested comparisons:**

| Special Events at Ardenwood          | District Rate   | Comparable Special Event                              | Rate                              |
|--------------------------------------|---|---|-----------------------------------|
| Cajun Zydeco Music Festival          | \$16/adult, \$2/child (\$20/adult, \$3/child at the Gate) | Cajun Creole Music Festival – Simi Valley             | \$18/adult, \$15/child (age 5-12) |
| Harvest Festival                     | \$8/adult, \$6/senior, \$5/child                          | Harvest Festival Original Art & Craft Show – San Jose | \$9/adult, \$7/senior, \$4/child  |
| An Ardenwood Christmas Special Event | \$8/adult, \$6/senior, \$5/child                          | City of Palmdale – A Christmas Story                  | \$12/adult/\$10/senior & child    |

BLACK DIAMOND MINES

Staff recommends increasing the fees as follows:

| SERVICE               | 2010 RATE  | 2011 RATE  | % CHANGE | LAST INCREASE |
|-----------------------|------------|------------|----------|---------------|
| Underground Mine Tour | \$3/person | \$5/person | 66%      | 2000          |

If the proposed fee changes are approved, revenue to the Park District will increase by approximately \$18,000.

CROWN BEACH and DEL VALLE

Parking/Entry fees recommendation pending outcome of November 2, 2010 ballot for California Proposition 21, Vehicle License Fee for Parks Act.

DEL VALLE

Staff recommends increasing the fees as follows:

| SERVICE                                      | 2010 RATE  | 2011 RATE  | % CHANGE | LAST INCREASE |
|--|------------|------------|----------|---------------|
| Family Camping: Walk-in/Drive-in Tent Site   | \$20/night | \$22/night | 10%      | 2009          |
| Hook-up Sites: Sewer and Water               | \$25/night | delete     |          | 2009          |
| Hook-up Sites: Sewer, Water, and Elec-50 amp | \$0        | \$45/night | n/a      | new           |

If the proposed fee changes are approved, revenue to the Park District will increase by approximately \$18,800.

GARIN

Staff recommends deleting from the fee schedule, non-access collection site:

| SERVICE                                     | 2010 RATE | 2011 RATE | % CHANGE | LAST CHANGE |
|---|-----------|-----------|----------|-------------|
| Meyers Estate Parking Fee - vehicle/trailer | \$3       | delete    | N/A      | N/A         |

If the proposed fee changes are approved, there will be no effect on revenue to the Park District.

MISSION PEAK

Staff recommends deleting from the fee schedule, non-access collection site:

| SERVICE                       | 2010 RATE | 2011 RATE | % CHANGE | LAST CHANGE |
|-------------------------------|-----------|-----------|----------|-------------|
| Parking Fee – vehicle/trailer | \$3       | delete    | N/A      | N/A         |

If the proposed fee changes are approved, there will be no effect on revenue to the Park District.

ROUND VALLEY

Staff recommends increasing the fees as follows:

| SERVICE         | 2010 RATE | 2011 RATE               | % CHANGE | LAST CHANGE |
|-----------------|-----------|-------------------------|----------|-------------|
| Backpacking Fee | n/a       | <b>\$5/person/night</b> | N/A      | new         |

If the proposed fee changes are approved, revenue to the Park District will increase by approximately **\$800**.

9. DISTRICT-WIDE RATE CHANGES

| SERVICE  | 2010 RATE  | 2011 RATE      | % CHANGE    | LAST CHANGE |
|--|------------|----------------|-------------|-------------|
| a. Day-Use Parking - Disabled Veterans, Former Prisoner of War                     | 50% Off    | Free           |             | 2009        |
| b. Nike Classroom Rental   | n/a        | \$25/hr        | n/a         | new         |
| c. Interpretive Program: Private/Profit Group                                      | n/a        | \$40/hr        | n/a         | new         |
| d. Special Event Day Camp Operation Permit   | \$20/year  | \$50/year      | 100%        | new         |
| e. Special Event Athletic Training or "Boot Camp" Program                          | n/a        | \$250/year     | n/a         | new         |
| f. Mobile Fish Exhibit or Mobile Visitor Center Use Fee (2 staff included/per day) | n/a        | \$200 -\$2,500 | n/a         | new         |
| g. Boat inspections - trailered  | \$6        | \$7            | 17%         | 2009        |
| h. Boat inspections – cartop   | \$3        | \$4            | 25%         | 2005        |
| <b>i. Boat launch – trailered</b>  | <b>\$4</b> | <b>\$5</b>     | <b>25%</b>  | <b>2005</b> |
| <b>j. Boat launch – cartop</b>   | <b>\$2</b> | <b>\$3</b>     | <b>50%</b>  | <b>1991</b> |
| <b>k. Boat launch – windsurf</b>   | <b>\$1</b> | <b>\$2</b>     | <b>100%</b> | <b>1991</b> |

Table notes:

- a. State Parks does not charge parking fee for this category. On the few occasions when presented with placard, visitors expected no fee instead of the reduced fee.
- b. Public Safety Headquarter training room, chemical toilets, no kitchen or sink.
- c. Interpretive fee for profit and private groups, fee is per hour, per employee.
- d. This is a Day Camp operator fee in addition to Reservable Site Fee. This fee was not in previous year schedules but has been in effect for two years. Increase to reflect administration costs associated with monitoring high volume of permits processed and intense application process.
- e. Athletic and Boot Camp groups have increased usage District-wide. At Lake Temescal in particular, these previously considered casual groups have migrated into routine schedules with impact to site.
- f. The Mobile Fish Exhibit and the Mobile Visitor Center will be in operation in 2011. The requested range of fee will be dependent on program amenities and nature of event or group.
- g-h. Boat inspections – fees consistent with Santa Clara County and other agency average fees for locations at Contra Loma, Del Valle, Quarry Lakes and Lake Chabot.
- i-k. Boat launch – fees to aid in capturing costs related to mussel inspection program at Contra Loma, Del Valle, Quarry Lakes, and Lake Chabot.

If the District-wide proposed fee changes are approved, revenue to the District may increase by approximately \$12,650.

#### 10. REGIONAL PARKS FOUNDATION MEMBERSHIP PROGRAM

This program and its fees are set and adjusted by the Regional Parks Foundation Board of Directors. Basic membership packages offer a number of benefits including unlimited day-use parking and free beach access privileges.

- Resident designates rates for those who reside in Alameda or Contra Costa Counties
- Non-Resident designates rates for those who reside outside Alameda or Contra Costa Counties

| SERVICE  | 2010 RATE | 2011 RATE | % CHANGE | LAST CHANGE |
|--|-----------|-----------|----------|-------------|
| Individual Membership:   |           |           |          |             |
| Regular Angler - Resident  | \$ 250    | \$ 290    | 16%      | 2008        |
| Regular Angler - Non-Resident                                    | \$ 325    | \$ 375    | 15%      | 2008        |
| Senior/Disabled Person or Student Angler                         | \$ 150    | \$ 175    | 17%      | 2008        |
| Add-On Park District Permits:                                    |           |           |          |             |
| Horse Trailer – Resident   | \$40      | \$45      | 13%      | 2005        |
| Horse Trailer – Non-Resident                                     | \$50      | \$55      | 10%      | 2008        |
| Senior, Disabled Person or Student Boat Launching - Resident     | \$40      | \$45      | 13%      | 2008        |
| Senior, Disabled Person or Student Boat Launching – Non-Resident | \$90      | \$95      | 6%       | 2008        |
| Regular Boat Launching – Resident                                | \$75      | \$80      | 7%       | 2008        |
| Regular Boat Launching – Non-Resident                            | \$90      | \$95      | 6%       | 2008        |

The Angler membership rate increases are in proportion to actual costs related to planting rainbow trout and channel catfish in the District's eleven fishing lakes. For 2010 and 2011 fish purchases, the District received the lowest bid that was 20% higher for rainbow trout and 4% higher for channel catfish than the previous year's contract. The Angler membership averages an increase of 16% to correspond with the actual planting costs. Add-on trailer and launch permits are being increased by \$5.00 to help alleviate processing and administrative costs.

## Single Stream Recycling Services

Thanks to the support from the CalRecycle, Civicorps Recycles! has a new single stream collection system which allows us to provide single stream services at competitive rates.



Place bottles and cans, plastic, paper and cardboard in blue bins and our crews collect and sort the materials. This efficient new system makes it easy and inexpensive to reduce "carbon footprints."

## Client Testimonials

"We selected Civicorps as a Strategic Alliance Partner several years ago. We selected the organization based on our goal of creating and supporting local Green Collar jobs that help the communities we serve. Operationally, Civicorps has been a strong partner who is always responsive to our needs. Civicorps assists our firm in meeting our Community Stewardship and Environmental goals. Civicorps staff members have been consistent and responsive to our environmental needs. They are a valuable partner and we appreciate their efforts, service and support."

— Mr. Taylor C. Gill, President & CEO, Landmark Industries, Inc.

"Civicorps Recycles! has provided us with great services for years. The people we've worked with have been outstanding and knowledgeable in their field. They are responsible individuals and are very responsive to our requests. We also appreciate their encouragement to recycle and their support for a more environmentally friendly community."

— laOg Vang, Asian Health Services

"Civicorps Recycle! is an outstanding recycling service provider. Recology East Bay utilizes Civicorps Recycles! to collect recyclables from over fifty accounts and their service record is professional and impressive. I highly recommend Civicorps Recycles!"

— Ron Risi, Operations Manager, Recology East Bay

## Civicorps Recycles! Plant and Fleet

Civicorps has a new recycling facility near the Oakland Coliseum with a state-of-the-art sorting system funded by CalRecycle.



Call or email Civicorps today to start saving money and recycling more easily and efficiently!

Phone: 510-652-2090

<http://www/cvicorps.org/programs/recycling>

## Why use Civicorps Recycles?

Civicorps has over 25 years of experience servicing hundreds of public and private accounts each year.

Civicorps Recycles! specializes in:

- ◆ Campus collection
- ◆ Special Events
- ◆ Commercial Buildings

Clients use Civicorps Recycles! because our system is:

- ◆ Inexpensive
- ◆ Environmental
- ◆ Easy to implement

Our customers look to Civicorps for knowledgeable, reliable and well-trained recycling employees. They also feel good about supporting a local agency that, trains and employs recent high school graduates, helping them get their start in the workforce.

## Social Responsibility

When clients hire Civicorps, they help the environment and help young people gain the skills necessary to be contributing members of the community.

Funded By

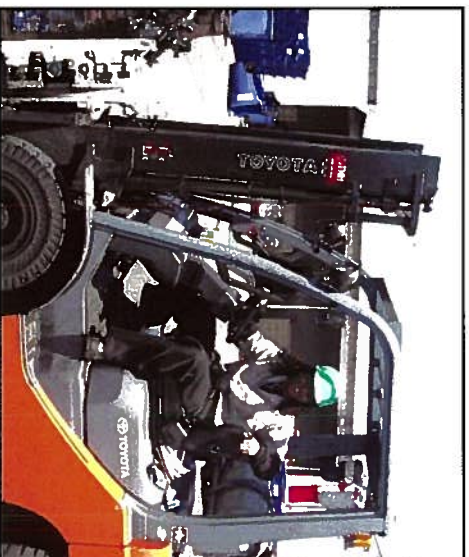


**CIVICORPS RECYCLES!**

Formerly The East Bay Conservation Corps

## ABOUT CIVICORPS

Civicorps promotes citizenship and builds civil society by creating educational models that draw upon the power of service as a way of learning. Civicorps Recycles! employs recent high school graduates from the community, providing them with their first service and work experiences.



Our young people climb the ladder of success in the industry by:

- ✓ Participating in on-the-job training
- ✓ Obtaining Class B Driver's Licenses
- ✓ Achieving equipment certification
- ✓ Gaining experience with collection routes



**CIVICORPS RECYCLES!**

Formerly The East Bay Conservation Corps

**Civicorps Recycles!**

6315 San Leandro Street

Oakland, CA 94621

Phone: 510-652-2090

Fax: 510-652-2092

Website: [www.cvcorps.org](http://www.cvcorps.org)



**CIVICORPS RECYCLES!**  
Formerly The East Bay Conservation Corps

## SINGLE STREAM RECYCLING SERVICES

- ◆ Bottles and Cans
- ◆ Plastic Containers
- ◆ Newspapers
- ◆ Cardboard
- ◆ Office Paper
- ◆ Mixed Paper



Beat the high prices of garbage collection with Civicorps Recycles!

We provide an easy,

single-stream recycling service to  
to any size business with

Recycling Carts, Dumpsters  
or Drop Box Service

Phone: 510-652-2090

<http://www.cvcorps.org/programs/recycling>