

OPEN year-round, Tuesday-Sunday, 10am-5pm,* also Memorial Day, Independence Day, and Labor Day. Train rides, blacksmithing demonstrations are available from April to mid-November on Thursday, Friday, Sunday, and during December events.

* No admittance after 4pm.

CLOSED Mondays, Thanksgiving Day, and Christmas Day. Storms may close farm without notice.

FEES — See insert for fee and event information. Ardenwood Historic Farm is operated in partnership between the East Bay Regional Park District and the City of Fremont. EBRPD membership privileges include free admission (special events excluded).

DOGS are not permitted in the park. **MODERN RECREATIONAL EQUIPMENT** (i.e. frisbees, footballs, soccer balls, bicycles), balloons, and BBQs are prohibited.

HOUSE TOURS are available from April to mid-November and during December events. Tours are conducted Thursday-Sunday and are limited. Tickets are available at the Arden Station on a first-come, first-served basis. You must be a minimum of 6 years of age to go on a tour. Groups of 20+ should make a reservation. Call 510-791-4196 for house tour information.

RESERVATIONS — To make reservations for the E-I-O picnic site call 1-888-EBPARKS (1-888-327-2757, option 2). Large groups desiring special programs, tours, and rides, or teachers seeking a school reservation package should call 510-544-2797.

DOCENTS & VOLUNTEERS — Ardenwood depends upon volunteers for its continued operation. Your interest in restoration, farming, gardening, house tours, historic crafts, or farmyard demonstrations will help keep the farm growing and flourishing. For more information call 510-544-2797.

ARDENWOOD



A farmer's legacy...

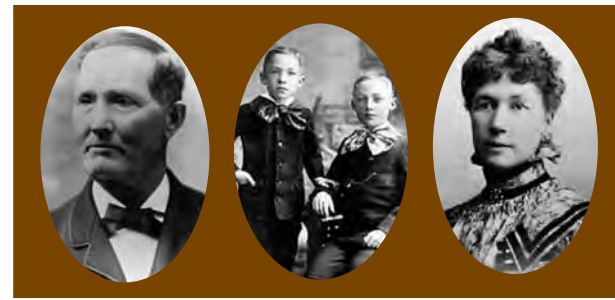
It was 1849 when George Patterson joined the stream of young men leaving the Midwest for California's gold fields. His dreams left little room for failure, but after a year and a half of mining he was ill and broke, so he turned to work he knew well: farming.

George gradually bought land with the money he earned by working for farmers near Mission San Jose. By the time he married Clara Hawley in 1877, he was on his way to acquiring nearly 6,000 acres of land and was one of the wealthiest and well-respected men in the area. At last he had struck "gold"—not in the hills, but through farming the fertile plains of the East Bay.

Today, Patterson's original house and land are part of Ardenwood Historic Farm. We invite you to come and experience farm life as it was near the turn of the 20th Century.



Ardenwood was named after a forest area described in Shakespeare's play *"As You Like It."*



George Henry and William Clara

The Patterson Family

...is your key to the past.

Cattle still graze in the pastures. The land still grows the kind of crops George Patterson tended 100 years ago, and the farmyard is still full of animals.

Staff and volunteers attired in Victorian clothing are on hand to show you through the Patterson family home, demonstrate farm chores, explain the social graces of the Victorian era, and guide you around the 205-acre farm.

The East Bay Regional Park District and the City of Fremont invite you to come often to Ardenwood; to picnic, play, and see for yourself what life was like at the turn of the 20th Century. It's a way of life nearly forgotten in the East Bay.

A tremendous community and Park District effort has brought the farm to this point, but it is far from complete. We are busy restoring antique pieces of farm equipment and adding some things that weren't here 100 years ago. So don't make this your only visit! Come back soon to see how things are coming along.

Grain Harvesting



Historic Chores



Farm Animals



 **EAST BAY REGIONAL PARK DISTRICT**

2950 Peralta Oaks Ct., P.O. Box 5381
Oakland, CA 94605-0381
1-888-EBPARKS (1-888-327-2757)
TDD phone 510-633-0460

www.ebparks.org



11/11

Historic Farm



East Bay Regional Park District
www.ebparks.org

ARDENWOOD HISTORIC FARM

1. VISITOR CENTER & ARDEN STATION

At the train station pick-up the latest program information, enjoy exhibits highlighting Ardenwood's history or board the farm's railroad for Deer Park Station (#3).

2. POOL SITE (reservable) This was the first concrete swimming pool built in the county. Now covered, it is used for special activities and weddings.

3. DEER PARK STATION For a ride to Arden Station (#1) board the farm's railway here.

4. KITCHEN GARDEN The heirloom vegetable garden once provided the family with fresh produce.

5. PATTERSON HOUSE Home to three generations of the Patterson family. It began as George Patterson's bachelor farmhouse built in 1857. The house was expanded with a Queen Anne addition in 1889 as the family, the farm, and their place in East Bay society grew.

6. AVIARY It was a symbol of status for a Victorian family to keep exotic fowl.

7. E-I-O PICNIC AREA (reservable) A great place for family picnics, birthday parties, and gatherings for groups of up to fifty. BBQ available.

8. CHICKEN COOP & FARM ANIMALS You'll see sheep, pigs, turkeys, and chickens.

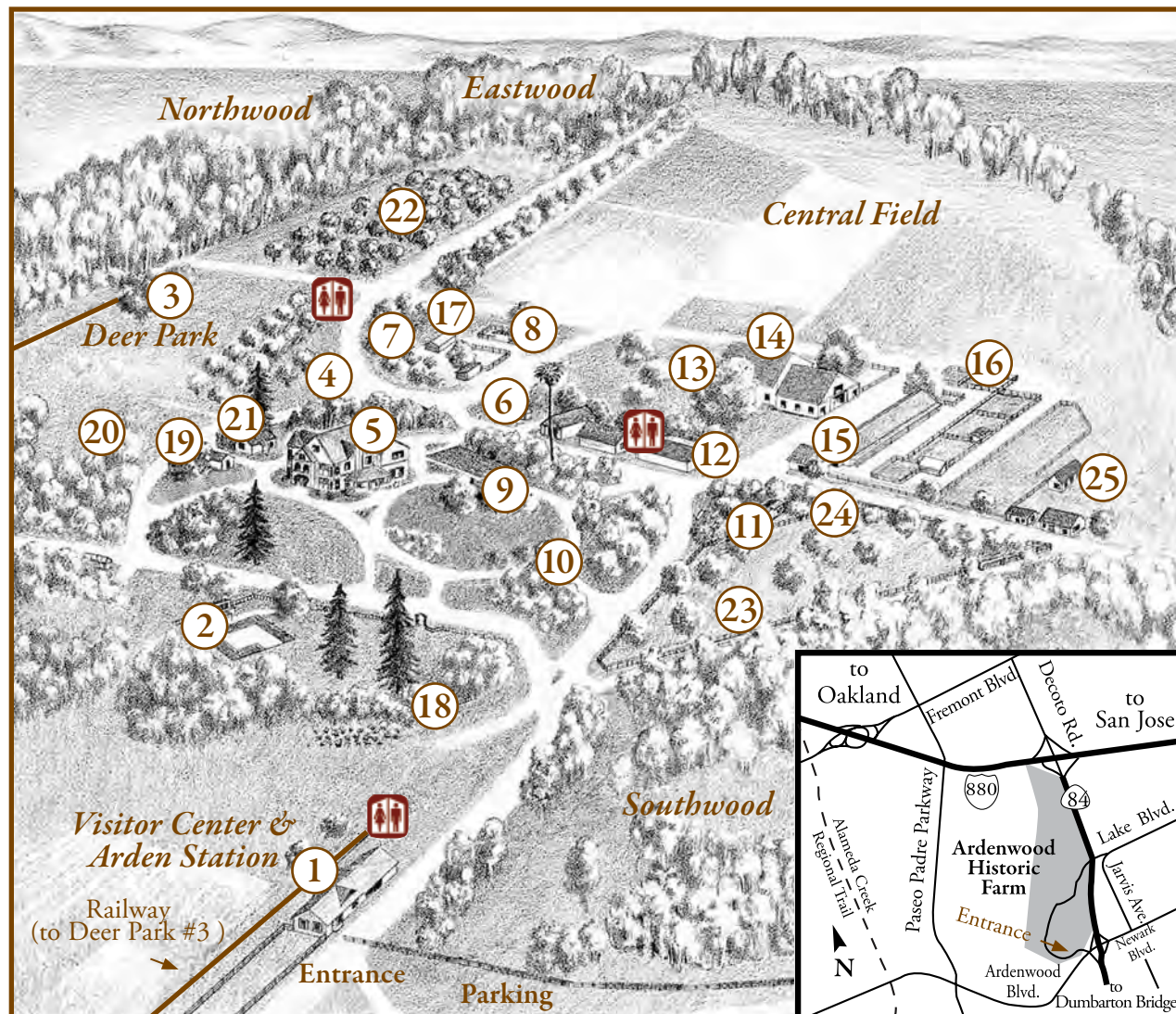
9. TENNIS COURT (circa 1900) A clay tennis court was a real luxury back then. It's been covered with asphalt for the time being.

10. GAZEBO (re-created) A common feature on many Victorian-Era estates.

11. FARMYARD PICNIC AREA

Picnic tables available on a first-come, first-serve basis.

12. GRANARY (re-created) Naturalist programs, lectures, and demonstrations happen here. Check the current issue of "Nature Nearby" for the schedule.



13. COUNTRY KITCHEN Check schedule for cooking demonstrations on our wood-burning stove. (April-mid-November)

14. HAYBARN (circa 1910) Equipment, and tack are stored in the barn. Corn Room programs meet here.

15. BLACKSMITH SHOP & EQUIPMENT SHED (circa 1850) The blacksmith fires up the forge. Look for vintage equipment, farm animals, and farmcraft demonstrations in the shed. (April-mid-November)

16. FARM ANIMALS Here you'll find farm animals including rabbits, sheep, goats, and cows.

17. TRACTOR SHED Here you'll find the farm's collection of antique tractors.

18. OHLONE INDIAN SITE Once a village site for Ardenwood's first inhabitants, the area is now protected in a natural state.

19. MILK HOUSE (mid 19th Century) The Milk House is a cool spot once used for storing produce, meat, and milk.

20. DEER PARK PICNIC AREA Large groups enjoy using the tables and play field.

21. COOK'S HOUSE (late 19th Century) The cook's house is now the Patterson House office.

22. WALNUT ORCHARD

23. PASTURE Watch for the farm's sheep and cows when they're not in the farmyard.

24. TANKHOUSE (reconstructed) Powered by a windmill, a tankhouse once provided the farm with water for the family and the crops. Step inside to explore our "Water Museum".

25. ARDENWOOD HISTORIC FARM PARK OPERATIONS OFFICE



34600 Ardenwood Blvd., Fremont, CA 94555

510-544-2797 awvisit@ebparks.org