

WEEKDAY PROGRAMS FOR YOUTH DECEMBER 2009 – FEBRUARY 2010




SEA SIBLINGS

9:30-10:30am and/or 11am-12pm

Spend an hour with your preschooler and their younger sibling for an introduction to outdoor fun.

12/8: Whales Tales
(9:30am) #22788 (11am) #22793
12/21: Slippery Slime
(9:30am) #22790 (11am) #22795
12/23: Animal House
(9:30am) #22791 (11am) #22796
12/29: For the Birds
(9:30am) #22789 (11am) #22794
1/12: Colorful Creatures- #23002
1/26: Wacky Waders- #23009
2/9: Reptile Friends- #23003
2/23: Nature Art- #23004

Fee: \$4

 Wheelchair accessible
(non-res) Residents outside of Alameda
and Contra Costa counties

SEA SQUIRTS

10am-11:30am or 11am-12:30pm

For 3-5 year olds along with an adult, parent or friend. Theme-related craft and snack provided.

12/1: Beautiful Butterflies- #22777
12/15: Whales Tales- #22780
12/22: Slippery Slime- #22784
12/28: Animal House- #22785
12/30: For the Birds- #22786
1/5: Colorful Creatures- #23006
1/19: Wacky Waders- #23008
2/2: Reptile Friends- #23010
2/23: Nature Art- #23011

Fee: \$6 (\$8 non-res.)

*Currently registering for December.
Online registration for Jan-Feb begins
Dec 8, and regular registration begins
Dec 17.*

*For registration call 888-EBPARKS
(888) 327-2757 or register at
www.ebparksonline.org*

Accommodation will be made for visitors with disabilities upon advance request.
For assistance please call (510) 544-3187 or e-mail: ccove@ebparks.org



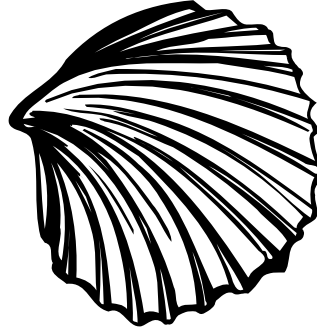
WEEKDAY PROGRAMS FOR YOUTH DECEMBER 2009 – FEBRUARY 2010



ESTUARY EXPLORERS

3:30-5pm

School-age kids like exploring nature, playing outdoors, and learning more independently – no parents required. Join us for this after school program! Snack included. (6-8 years)

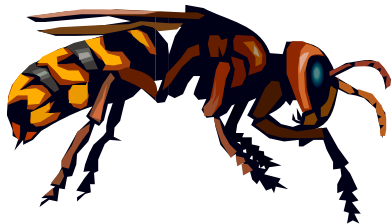



- 12/1: Beautiful Butterflies- #22801
- 12/15: Whales Tales- #22802
- 12/22: Slippery Slime- #22803
- 12/ 28: Animal House- #22804
- 12/30: For the Birds- #22805
- 1/5: Colorful Creatures- #23015
- 1/19: Wacky Waders - #23016
- 2/2: Reptile Friends- #23017
- 2/16: Nature Art- #23018

Currently registering for Dec. Online registration for Jan-Feb begins Dec 8, and regular registration begins Dec 17.

Fee: \$6 (\$8 non-res.)

For registration call 888-EBPARKS (888) 327-2757 or register at www.ebparksonline.org



 Wheelchair accessible
(non-res) Residents outside of Alameda and Contra Costa counties

Accommodation will be made for visitors with disabilities upon advance request.
For assistance please call (510) 544-3187 or e-mail: ccove@ebparks.org



East Bay Regional Park District

CRAB COVE VISITOR CENTER & AQUARIUM

1252 McKay Ave., Alameda, CA 94501

Phone: (510) 544-3187 | e-mail: ccove@ebparks.org

www.ebparks.org