

Pleasanton Ridge Regional Park Land Use Plan Newsletter #3 Land Use Plan Update



LAND USE PLAN OVERVIEW

Pleasanton Ridge Regional Park is located in Alameda County along the western perimeter of the City of Pleasanton. Primary access to the 5,152 acres that are currently open to the public is from the Foothill staging area located near the southeast boundary of the park along Foothill Road.

East Bay Regional Park District (EBRPD) has begun development of a Land Use Plan (LUP) for the Park that will evaluate existing resources and facilities; document agreements and restrictions related to use of the park; and recommend programs for managing resources, and recreation uses and service facilities. The 7,352 acre property includes over 54 miles of (sanctioned [signed and mapped] and unsanctioned [developed through informal use]) trails on the 5,152 acres that are currently open to the public, as well as land banked parcels. The LUP will open over 2,200 acres of parklands to the public providing opportunities for three new access points and adding 12 miles of narrow and service road trails for a total trail system of 62 miles of trails. The new system incorporates about 2 miles of unsanctioned trails, and involves closing nearly 10 miles of service road and narrow trails and reducing the width of about 4 miles of service road trails to create narrow trails. The plan also proposes picnic areas, back-country camping sites, and view and interpretive opportunities.

COMMUNITY INPUT INTO PLEASANTON RIDGE REGIONAL PARK LAND USE PLANNING PROCESS

To date, there have been two opportunities for community input into the planning process, the June 2009 scoping meeting and the 2009 on-site trail use survey. Community support derived from this input has been applied to the draft *Access & Trails Concept Plan Map* in the following elements:

- Additional access into the Park
- A mixed trail system incorporating:
 - °Narrow trails
 - °Service road trails
- Picnic areas/ shelters
- Back-country camping sites
- Interpretation of heritage sites as an integral part of the concept plan.

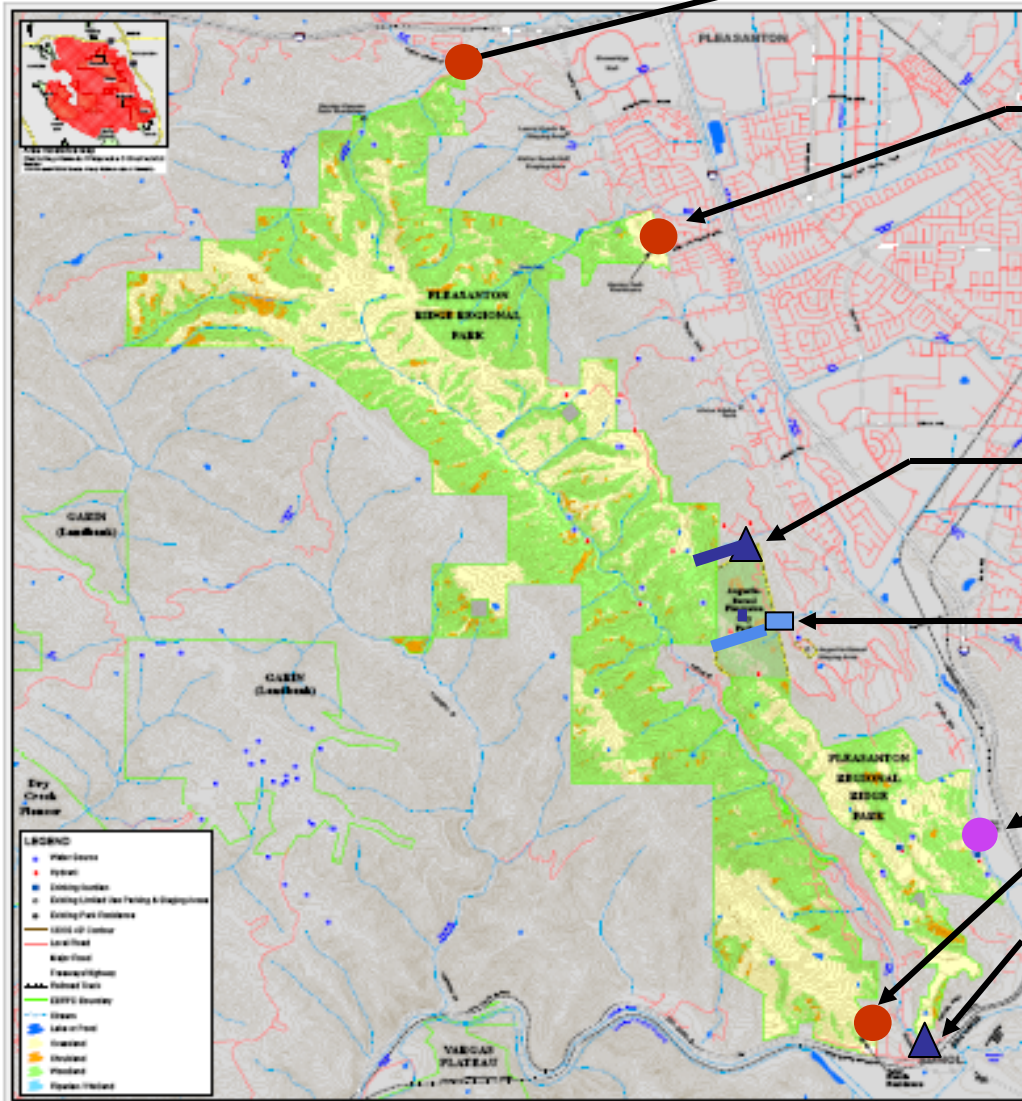
The April 6th Spring Open House Meeting Hall Presentation will offer a third opportunity for the community to provide input into the development of the Pleasanton Ridge Regional Park Land Use Plan, as will comments received via letters and emails.

East Bay Regional Park District



Draft Pleasanton Ridge Regional Park Public Access & Trails Concept Plan Map

PARK ACCESS



NEW - Garms
Staging area at Las Positas Rd. with picnic area, park residence & natural surface trails



NEW – Devany Canyon
Walk-bike access – No vehicle parking

EXISTING – Longview Dr.
Walk-bike in access – No vehicle parking



EXISTING - Foothill Retain
existing staging area and amenities with option for future parking expansion

EXISTING - Augustin Bernal Park
Access restricted to Pleasanton residents



EXISTING - Thermalito Trail
Walk-bike access – No vehicle parking



NEW - Tyler Ranch
Staging area with picnic area, park residence & corps yard

EXISTING & PROPOSED STAGING AREAS

Draft Pleasanton Ridge Regional Park Public Access & Trails Concept Plan Map

BALANCING RECREATION, ENVIRONMENT & OPERATIONS

The trail system balances three key elements of the District's mission: the park user's recreational access and experience, sustainable practices addressing the sensitivity of habitat and environmental features, and management and operations programs directed at visitor safety and enjoyment and protection of parkland resources.

TRAIL SYSTEM GOALS

To create a viable, multi-use trail system comprised of narrow, and service road width trails that will:

- Provide **high quality experiences** incorporating: existing sanctioned and unsanctioned trails and new trails including: a section of the Calaveras Ridge Trail, a viable connection between Sunol, Main and Pleasanton Ridges; and many shorter loops
- Protect/avoid sensitive habitat/cultural sites** by incorporating existing trails into system that minimize: resource habitat disturbance; soil displacement; and associated permitting requirements
- Lessen trail and road density** with distance from start areas (distant areas should feel remote) by closing and removing poor quality trails and restoring damaged sites where trails are redundant and/or have significant adverse resource impacts

TRAIL CONCEPT PLAN ELEMENTS



Narrow Trails



Service Roads Narrowed to Create Narrow Trails



Service Road Trails



Picnic Areas



Back Country Camping



Interpretation



Viewpoints

STANDARDS & ASSUMPTIONS

- Trail Types** - Two trail categories: narrow (<4') and service road trails (>8')
- Trail Difficulty and Desired Experience** - Categorizes trails according to level of obstacles/challenges (not user skill level) in keeping with Universal Trail Assessment Process
- Trail Lengths**. Trail system provides a variety of lengths of loop trails allowing for one hour to several hour trips on foot, bike or horse

INTERPRETIVE EXHIBITS & PROGRAMS

- A system wide approach to interpretive exhibits and recreation programs utilizing short and long trail loops of the trail system to take advantage of view opportunities and delineate interpretive experiences
- Programming elements such as accommodating organized events will be explored as the LUP is further developed.



STAYING INVOLVED & CONNECTED

For more information or to provide comments on the *Draft Pleasanton Ridge Regional Park Public Access & Trails Concept Plan Map* contact: Julie Bondurant, Senior Park Planner at 510-544-2323 or plan_pleasantonridge@ebparks.org. Also note that information on the draft **Public Access & Trails Concept Plan Map** is available on the Park District's website, www.ebparks.org, and at the following location: East Bay Regional Park District (EBRPD), 2950 Peralta Oaks Court, Oakland, CA 94605.

Your participation will help us ensure that the Land Use Plan is founded on the best possible information and that the ideas and desires of the community are taken into consideration. There are several easy ways for you to participate:

- Sign up on the e-mail mailing list: plan_pleasantonridge@ebparks.org
- Visit our website at the following link: www.ebparks.org
- Attend the **Spring Presentation & Open House on Wednesday, April 6th, 2011 at 7pm in the City of Pleasanton at the Veteran's Memorial Building, 301 Main Street, Pleasanton**
- Volunteer - Information about our volunteer program can be accessed at the following link: www.ebparks.org

TIMELINE OF PLANNING PROCESS AT A GLANCE

