

YOU ARE INVITED

TO HELP PLAN FOR THE FUTURE OF GARIN AND DRY CREEK PIONEER REGIONAL PARKS

**Please Join the East Bay Regional Park District
for a Public Input & Environmental Scoping Meeting**

**Wednesday, January 12, 2011, 6:45 PM
Stonebrae Elementary School, Multi-Purpose Room
28761 Hayward Blvd, Hayward, CA 94542**

WE NEED YOUR PARTICIPATION

The East Bay Regional Park District is preparing a draft land use plan amendment and environmental review in compliance with the California Environmental Quality Act (CEQA) for Garin and Dry Creek Pioneer Regional parks. The plan will set forth guidelines and recommendations and will establish a long-range vision that integrates resource management with public access, use and interpretation. Please join us on the evening of January 12, 2011, as Park District staff will present a preliminary park design concept and an update on the planning process. We invite you to share your ideas for enhancing the parkland and to provide feedback on the issues to be addressed in the environmental review process.

You do not need to attend the meeting to participate. Comment letters may also be mailed to: EBRPD, Planning & Stewardship Dept., 2950 Peralta Oaks Court, Oakland, CA 94605 (Attn: Raphael Breines, Senior Park Planner). You can also contact us with ideas, questions, comments or to be put on the mailing list for this project: 510.544.2325 and rbreines@ebparks.org.

This will be the first public meeting in a series and later in 2011 staff will release a draft plan and CEQA analysis for public review. These documents will be presented at a future public meeting and will be available on the Park District web site: www.ebparks.org.

PLANNING FOR AN EXPANDED PARK

Garin and Dry Creek Pioneer Regional parks were opened to the public in 1965 and 1979, respectively, and are significant as two of the few large, public open spaces immediately adjacent to the surrounding urbanized cities of Hayward, Union City and Fremont. For almost 40 years the Park District has been engaged in negotiations for land on Walpert Ridge and it has been a high priority for the Board of Directors to add land in this area to the regional park system. The Park District is now in a position to plan for close to 4,000 acres of additional parkland adjoining Garin and Dry Creek Pioneer Regional parks.

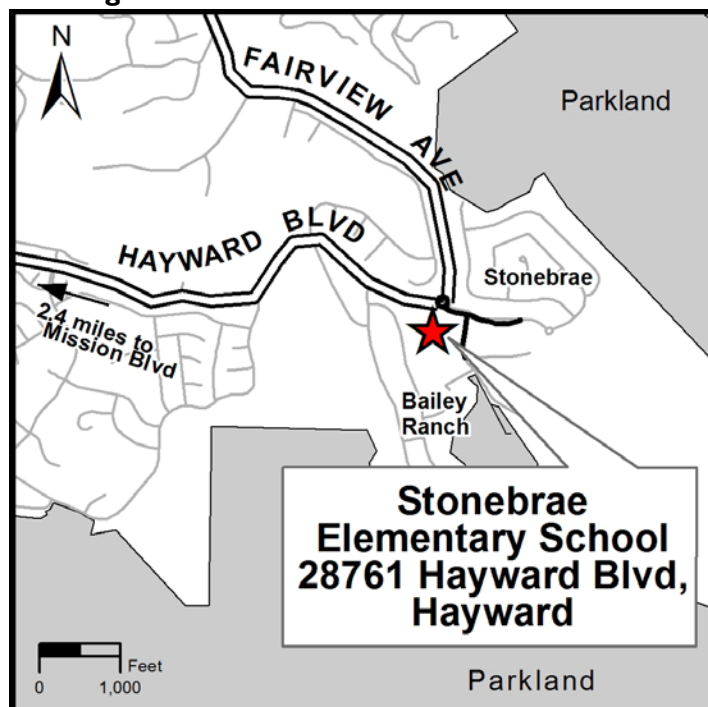
SIGNIFICANT RESOURCES & OPPORTUNITIES

Park District staff has spent many months collecting data and developing preliminary recommendations for use and management of existing and future parkland. The parkland is located on the northern end of Walpert Ridge and provides spectacular views. The land consists of undulating slopes along ridgetop areas and extremely steep and rugged side slopes. Importantly, this land provides for the protection of open space and its preservation will contribute greatly to the long-term conservation and re-

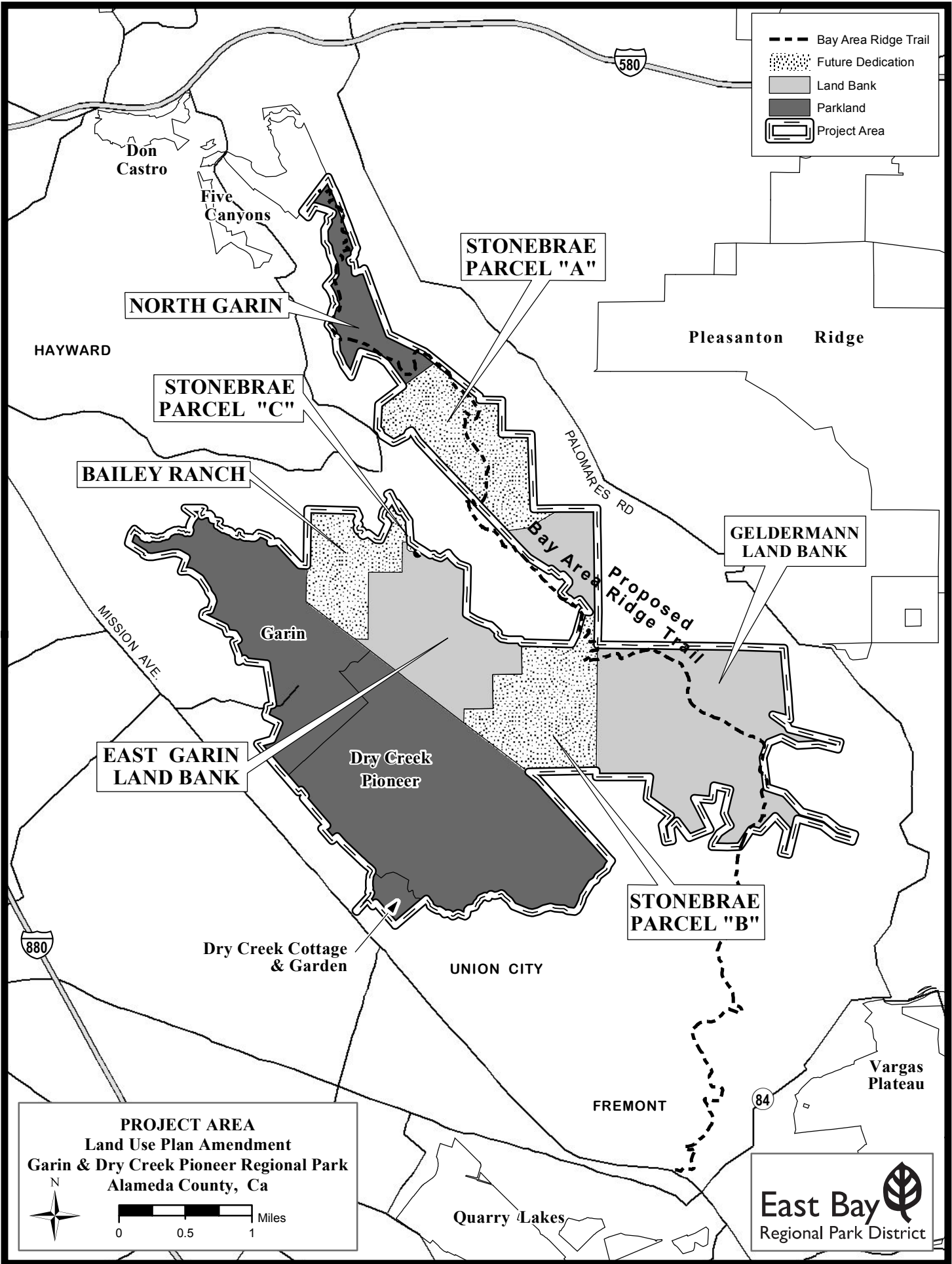
covery of state and federally listed wildlife species, specifically the threatened Alameda whipsnake and California red-legged frog. Moreover, for thousands of years this land was home to Native Americans and more recently to several generations of California's early pioneers. As a result, sensitive cultural resources, both historic and prehistoric, occur. The most well-known is "Ukraina," a California Historic Landmark, which marks the homesite of Agapius Honcharenko (1832-1916), a Ukrainian by birth who became a Greek Orthodox priest and whose political writings were internationally known. Significant Native American resources are located throughout the parkland.

The Park District aims to develop a balanced plan to protect and enhance natural and cultural resources while providing the public with opportunities for low-intensity recreational use, interpretation and enjoyment. Thank you for participating in the Park District's land use planning process. For more information on this first public meeting, please contact Raphael Breines at 510.544.2325 or rbreines@ebparks.org.

Meeting Location



Enter school parking lot on Carden Lane



- Bay Area Ridge Trail
- Future Dedication
- Land Bank
- Parkland
- Project Area

PROJECT AREA
Land Use Plan Amendment
Garin & Dry Creek Pioneer Regional Park
Alameda County, Ca

East Bay
 Regional Park District