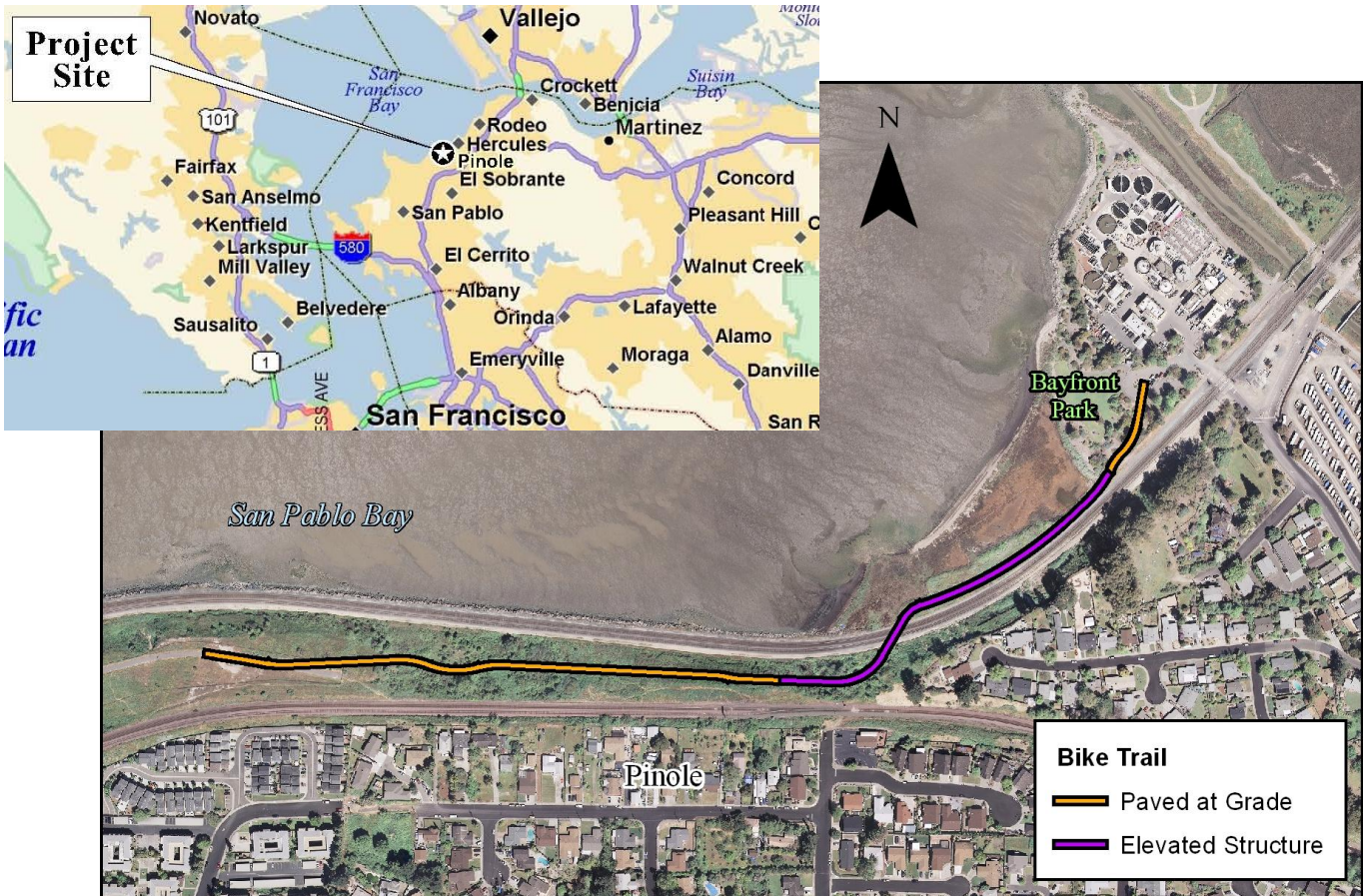


San Francisco Bay Trail Pinole Shores to Bay Front Park

Scoping Session and Public Information Meeting

Pinole City Hall, Council Chambers
2131 Pear Street, Pinole, CA 94564
Thursday, August 26, 7:00pm

The East Bay Regional Park District in cooperation with the City of Pinole proposes to construct a section of the San Francisco Bay Trail in Pinole between Pinole Shores and Bay Front Park, a distance of approximately 0.5 mile. The proposed project would extend an existing Class I paved trail from a hillside bluff across from Hazel Lane in Pinole Shores east over the Union Pacific Railroad tracks to connect to an existing path in Bay Front Park



Contact: Sean Dougan, Resource Analyst, EBRPD
Interagency Planning and Land Acquisition Division
510-544-2611

